

ADAM2 antibody - N-terminal region
Rabbit Polyclonal Antibody
Catalog # AI13581**Specification**

ADAM2 antibody - N-terminal region - Product Information

Application	WB
Primary Accession	O99965
Other Accession	NM_001464 , NP_001455
Reactivity	Human, Rat, Pig
Predicted	Human, Rat, Pig
Host	Rabbit
Clonality	Polyclonal
Calculated MW	81kDa KDa

ADAM2 antibody - N-terminal region - Additional Information**Gene ID** 2515**Alias Symbol** **CRYN1, CRYN2, CT15, FTNB, PH-30b, PH30**
Other Names

Disintegrin and metalloproteinase domain-containing protein 2, ADAM 2, Cancer/testis antigen 15, CT15, Fertilin subunit beta, PH-30, PH30, PH30-beta, ADAM2, FTNB

Format

Liquid. Purified antibody supplied in 1x PBS buffer with 0.09% (w/v) sodium azide and 2% sucrose.

Reconstitution & Storage

Add 50 ul of distilled water. Final anti-ADAM2 antibody concentration is 1 mg/ml in PBS buffer with 2% sucrose. For longer periods of storage, store at 20°C. Avoid repeat freeze-thaw cycles.

Precautions

ADAM2 antibody - N-terminal region is for research use only and not for use in diagnostic or therapeutic procedures.

ADAM2 antibody - N-terminal region - Protein Information**Name** ADAM2**Synonyms** FTNB**Function**

Sperm surface membrane protein that may be involved in sperm- egg plasma membrane adhesion and fusion during fertilization. Could have a direct role in sperm-zona binding or migration of sperm from the uterus into the oviduct. Interactions with egg membrane could be mediated via binding between its disintegrin-like domain to one or more integrins receptors on the egg. This is a non catalytic metalloprotease-like protein.

Cellular Location

Membrane; Single-pass type I membrane protein.

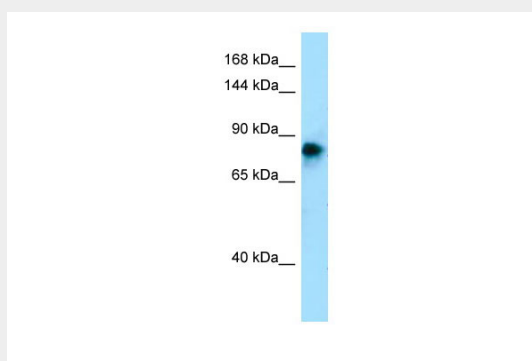
Tissue Location

Expressed specifically in spermatogenic cells in the seminiferous cells. Not detected in fetal tissues

ADAM2 antibody - N-terminal region - Protocols

Provided below are standard protocols that you may find useful for product applications.

- [Western Blot](#)
- [Blocking Peptides](#)
- [Dot Blot](#)
- [Immunohistochemistry](#)
- [Immunofluorescence](#)
- [Immunoprecipitation](#)
- [Flow Cytometry](#)
- [Cell Culture](#)

ADAM2 antibody - N-terminal region - Images

WB Suggested Anti-ADAM2 Antibody Titration: 1.0 µg/ml
Positive Control: Fetal Skin

ADAM2 antibody - N-terminal region - References

Vidaeus C.M., et al. Mol. Reprod. Dev. 46:363-369(1997).
Gupta S.K., et al. Biochem. Biophys. Res. Commun. 224:318-326(1996).
Burkin H.R., et al. Genomics 40:190-192(1997).
Hall L., et al. Submitted (APR-1999) to the EMBL/GenBank/DDBJ databases.