

**IL13RA2 antibody - middle region**  
**Rabbit Polyclonal Antibody**  
**Catalog # AI13577****Specification**

---

**IL13RA2 antibody - middle region - Product Information**

Application	<b>WB</b>
Primary Accession	<a href="#">Q14627</a>
Other Accession	<a href="#">NM_000640</a> , <a href="#">NP_000631</a>
Reactivity	<b>Human, Rat, Rabbit</b>
Predicted	<b>Human, Rabbit</b>
Host	<b>Rabbit</b>
Clonality	<b>Polyclonal</b>
Calculated MW	<b>42kDa KDa</b>

**IL13RA2 antibody - middle region - Additional Information****Gene ID** 3598**Alias Symbol** **CD213A2, IL-13R, IL13BP, CT19****Other Names**

Interleukin-13 receptor subunit alpha-2, IL-13 receptor subunit alpha-2, IL-13R subunit alpha-2, IL-13R-alpha-2, IL-13RA2, Interleukin-13-binding protein, CD213a2, IL13RA2, IL13R

**Format**

Liquid. Purified antibody supplied in 1x PBS buffer with 0.09% (w/v) sodium azide and 2% sucrose.

**Reconstitution & Storage**

Add 50 ul of distilled water. Final anti-IL13RA2 antibody concentration is 1 mg/ml in PBS buffer with 2% sucrose. For longer periods of storage, store at 20°C. Avoid repeat freeze-thaw cycles.

**Precautions**

IL13RA2 antibody - middle region is for research use only and not for use in diagnostic or therapeutic procedures.

**IL13RA2 antibody - middle region - Protein Information****Name** IL13RA2**Synonyms** IL13R**Function**

Binds as a monomer with high affinity to interleukin-13 (IL13), but not to interleukin-4 (IL4).

**Cellular Location**

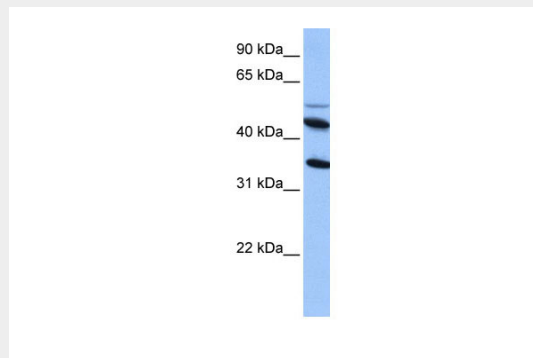
Membrane; Single-pass type I membrane protein.

## IL13RA2 antibody - middle region - Protocols

Provided below are standard protocols that you may find useful for product applications.

- [Western Blot](#)
- [Blocking Peptides](#)
- [Dot Blot](#)
- [Immunohistochemistry](#)
- [Immunofluorescence](#)
- [Immunoprecipitation](#)
- [Flow Cytometry](#)
- [Cell Culture](#)

## IL13RA2 antibody - middle region - Images



WB Suggested Anti-IL13RA2 Antibody Titration: 0.2-1  $\mu$ g/ml  
Positive Control: HepG2 cell lysate

## IL13RA2 antibody - middle region - References

- Caput D., et al. J. Biol. Chem. 271:16921-16926(1996).  
Donaldson D.D., et al. Submitted (OCT-1996) to the EMBL/GenBank/DDBJ databases.  
Guo J., et al. Genomics 42:141-145(1997).  
Ota T., et al. Nat. Genet. 36:40-45(2004).  
Ross M.T., et al. Nature 434:325-337(2005).