

AASDH antibody - middle region
Rabbit Polyclonal Antibody
Catalog # AI13551**Specification**

AASDH antibody - middle region - Product Information

Application	WB
Primary Accession	O4L235
Other Accession	NM_181806 , NP_861522
Reactivity	Human, Mouse, Rat, Rabbit, Horse, Bovine, Guinea Pig, Dog
Predicted Host	Human, Rat, Horse, Bovine, Dog
Clonality	Rabbit
Calculated MW	Polyclonal 122kDa KDa

AASDH antibody - middle region - Additional Information**Gene ID** 132949**Alias Symbol** **ACSF4, LYS2, NRPS1098, NRPS998****Other Names**

Acyl-CoA synthetase family member 4, 6.2.1.-, Amino adipate-semialdehyde dehydrogenase, Protein NRPS998, AASDH, ACSF4, U26

Format

Liquid. Purified antibody supplied in 1x PBS buffer with 0.09% (w/v) sodium azide and 2% sucrose.

Reconstitution & Storage

Add 50 ul of distilled water. Final anti-AASDH antibody concentration is 1 mg/ml in PBS buffer with 2% sucrose. For longer periods of storage, store at 20°C. Avoid repeat freeze-thaw cycles.

Precautions

AASDH antibody - middle region is for research use only and not for use in diagnostic or therapeutic procedures.

AASDH antibody - middle region - Protein Information**Name** AASDH**Synonyms** ACSF4, U26**Function**

Covalently binds beta-alanine in an ATP-dependent manner to form a thioester bond with its phosphopantetheine group and transfers it to an, as yet, unknown acceptor. May be required for a post-translational protein modification or for post-transcriptional modification of an RNA.

Tissue Location

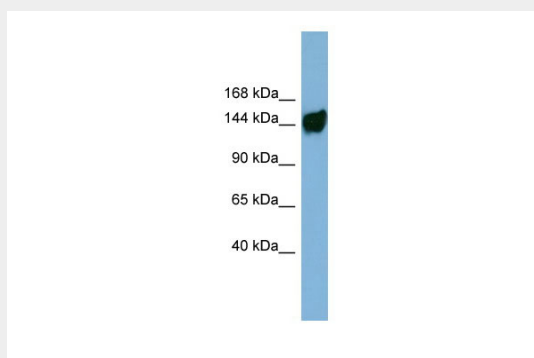
Ubiquitously expressed in adult tissues.

AASDH antibody - middle region - Protocols

Provided below are standard protocols that you may find useful for product applications.

- [Western Blot](#)
- [Blocking Peptides](#)
- [Dot Blot](#)
- [Immunohistochemistry](#)
- [Immunofluorescence](#)
- [Immunoprecipitation](#)
- [Flow Cytometry](#)
- [Cell Culture](#)

AASDH antibody - middle region - Images



WB Suggested Anti-AASDH Antibody Titration: 0.2-1 μ g/ml

ELISA Titer: 1:312500

Positive Control: ACHN cell lysate

AASDH antibody - middle region - References

Wang L., et al. Mol. Biol. Rep. 32:47-53(2005).

Paliga K., et al. Submitted (SEP-2003) to the EMBL/GenBank/DDBJ databases.

Bechtel S., et al. BMC Genomics 8:399-399(2007).

Hillier L.W., et al. Nature 434:724-731(2005).

Zhang Q.-H., et al. Genome Res. 10:1546-1560(2000).