

PCP2 antibody - N-terminal region
Rabbit Polyclonal Antibody
Catalog # AI13536

Specification

PCP2 antibody - N-terminal region - Product Information

| | |
|-------------------|--|
| Application | WB |
| Primary Accession | Q8IVA1 |
| Other Accession | NM_174895 , NP_777555 |
| Reactivity | Human, Mouse, Rat, Rabbit, Pig, Horse, Bovine, Guinea Pig, Dog |
| Predicted | Human, Mouse, Rat, Rabbit, Horse, Bovine, Guinea Pig, Dog |
| Host | Rabbit |
| Clonality | Polyclonal |
| Calculated MW | 14kDa KDa |

PCP2 antibody - N-terminal region - Additional Information

Gene ID 126006

Alias Symbol [DKFZp686M0187](#), [FLJ27345](#), [GPSM4](#), [L7](#), [MGC41903](#)

Other Names

Purkinje cell protein 2 homolog, PCP2

Format

Liquid. Purified antibody supplied in 1x PBS buffer with 0.09% (w/v) sodium azide and 2% sucrose.

Reconstitution & Storage

Add 50 ul of distilled water. Final anti-PCP2 antibody concentration is 1 mg/ml in PBS buffer with 2% sucrose. For longer periods of storage, store at 20°C. Avoid repeat freeze-thaw cycles.

Precautions

PCP2 antibody - N-terminal region is for research use only and not for use in diagnostic or therapeutic procedures.

PCP2 antibody - N-terminal region - Protein Information

Name PCP2

Function

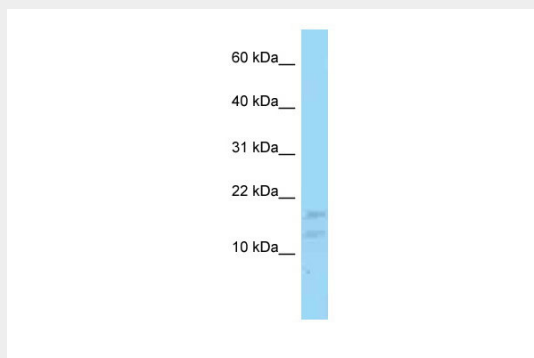
May function as a cell-type specific modulator for G protein- mediated cell signaling.

PCP2 antibody - N-terminal region - Protocols

Provided below are standard protocols that you may find useful for product applications.

- [Western Blot](#)
- [Blocking Peptides](#)
- [Dot Blot](#)
- [Immunohistochemistry](#)
- [Immunofluorescence](#)
- [Immunoprecipitation](#)
- [Flow Cytometry](#)
- [Cell Culture](#)

PCP2 antibody - N-terminal region - Images



WB Suggested Anti-PCP2 Antibody Titration: 1.0 μ g/ml
Positive Control: MCF7 Whole Cell

PCP2 antibody - N-terminal region - References

Grimwood J., et al. Nature 428:529-535(2004).