

IQCD antibody - N-terminal region
Rabbit Polyclonal Antibody
Catalog # AI13438**Specification**

IQCD antibody - N-terminal region - Product Information

Application	WB
Primary Accession	O96DY2
Other Accession	NM_138451 , NP_612460
Reactivity	Human
Predicted	Human
Host	Rabbit
Clonality	Polyclonal
Calculated MW	40kDa KDa

IQCD antibody - N-terminal region - Additional Information**Gene ID** 115811**Alias Symbol** 4933433C09Rik**Other Names**

IQ domain-containing protein D, IQCD

Format

Liquid. Purified antibody supplied in 1x PBS buffer with 0.09% (w/v) sodium azide and 2% sucrose.

Reconstitution & Storage

Add 50 ul of distilled water. Final anti-IQCD antibody concentration is 1 mg/ml in PBS buffer with 2% sucrose. For longer periods of storage, store at 20°C. Avoid repeat freeze-thaw cycles.

Precautions

IQCD antibody - N-terminal region is for research use only and not for use in diagnostic or therapeutic procedures.

IQCD antibody - N-terminal region - Protein Information**Name** IQCD**Synonyms** DRC10 {ECO:0000250|UniProtKB:A8J0N6}**Function**

Component of the nexin-dynein regulatory complex (N-DRC), a key regulator of ciliary/flagellar motility which maintains the alignment and integrity of the distal axoneme and regulates microtubule sliding in motile axonemes.

Cellular Location

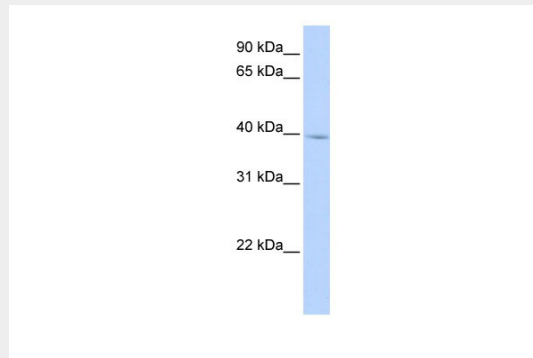
Cytoplasm, cytoskeleton, flagellum axoneme {ECO:0000250|UniProtKB:A8J0N6}

IQCD antibody - N-terminal region - Protocols

Provided below are standard protocols that you may find useful for product applications.

- [Western Blot](#)
- [Blocking Peptides](#)
- [Dot Blot](#)
- [Immunohistochemistry](#)
- [Immunofluorescence](#)
- [Immunoprecipitation](#)
- [Flow Cytometry](#)
- [Cell Culture](#)

IQCD antibody - N-terminal region - Images



WB Suggested Anti-IQCD Antibody Titration: 0.2-1 μ g/ml
ELISA Titer: 1:62500
Positive Control: Human heart

IQCD antibody - N-terminal region - References

Ota T., et al. Nat. Genet. 36:40-45(2004).
Scherer S.E., et al. Nature 440:346-351(2006).