

PRRC1 antibody - middle region
Rabbit Polyclonal Antibody
Catalog # AI13427

Specification

PRRC1 antibody - middle region - Product Information

Application	WB
Primary Accession	O96M27
Other Accession	NM_130809 , NP_570721
Reactivity	Human, Mouse, Rat, Rabbit, Pig, Horse, Bovine, Guinea Pig, Dog
Predicted	Human, Mouse, Rat, Pig, Chicken, Bovine, Guinea Pig, Dog
Host	Rabbit
Clonality	Polyclonal
Calculated MW	47kDa KDa

PRRC1 antibody - middle region - Additional Information

Gene ID 133619

Alias Symbol **FLJ32875**
Other Names
Protein PRRC1, Proline-rich and coiled-coil-containing protein 1, PRRC1

Format

Liquid. Purified antibody supplied in 1x PBS buffer with 0.09% (w/v) sodium azide and 2% sucrose.

Reconstitution & Storage

Add 50 ul of distilled water. Final anti-PRRC1 antibody concentration is 1 mg/ml in PBS buffer with 2% sucrose. For longer periods of storage, store at 20°C. Avoid repeat freeze-thaw cycles.

Precautions

PRRC1 antibody - middle region is for research use only and not for use in diagnostic or therapeutic procedures.

PRRC1 antibody - middle region - Protein Information

Name PRRC1

Function

May act as a regulator of the protein kinase A (PKA) activity during embryonic development.

Cellular Location

Golgi apparatus. Cytoplasm {ECO:0000250|UniProtKB:Q5XJA3}

Tissue Location

Ubiquitously expressed with higher expression in kidney, liver and placenta (PubMed:15541471).

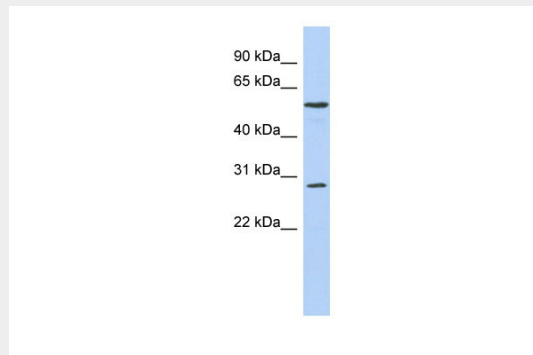
Detected in embryonic kidney cells (HEK293 cells) (at protein level) (PubMed:20018846)

PRRC1 antibody - middle region - Protocols

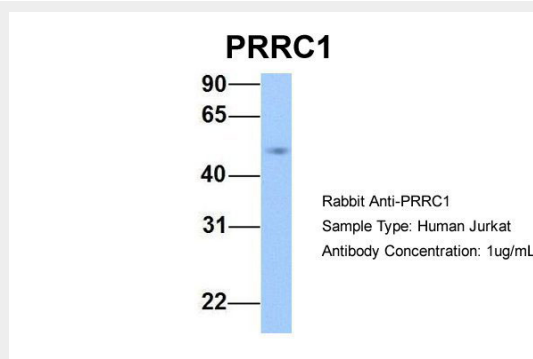
Provided below are standard protocols that you may find useful for product applications.

- [Western Blot](#)
- [Blocking Peptides](#)
- [Dot Blot](#)
- [Immunohistochemistry](#)
- [Immunofluorescence](#)
- [Immunoprecipitation](#)
- [Flow Cytometry](#)
- [Cell Culture](#)

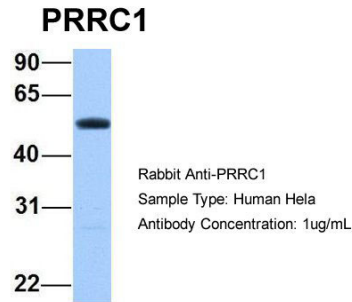
PRRC1 antibody - middle region - Images



WB Suggested Anti-PRRC1 Antibody Titration: 0.2-1 $\mu\text{g/ml}$
ELISA Titer: 1:312500
Positive Control: OVCAR-3 cell lysate



Host:Rabbit
Target Name:PRRC1
Sample Tissue:Human Jurkat
Antibody Dilution: 1.0 $\mu\text{g/ml}$ PRRC1 is supported by BioGPS gene expression data to be expressed in Jurkat

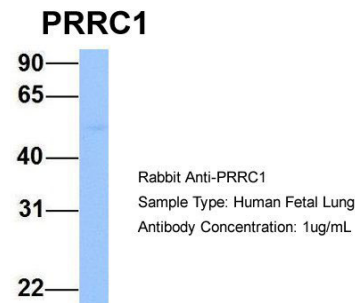


Host:Rabbit

Target Name:PRRC1

Sample Tissue:Human HeLa

Antibody Dilution: 1.0µg/ml PRRC1 is supported by BioGPS gene expression data to be expressed in HeLa



Host:Rabbit

Target Name:PRRC1

Sample Tissue:Human Fetal Lung

Antibody Dilution: 1.0µg/ml

PRRC1 antibody - middle region - References

Kamakari S.,et al.Leuk. Res. 29:17-31(2005).

Jikuya H.,et al.Submitted (JUL-2002) to the EMBL/GenBank/DDBJ databases.

Ota T.,et al.Nat. Genet. 36:40-45(2004).

Bechtel S.,et al.BMC Genomics 8:399-399(2007).

Mural R.J.,et al.Submitted (SEP-2005) to the EMBL/GenBank/DDBJ databases.