

**ASZ1 antibody - middle region**  
**Rabbit Polyclonal Antibody**  
**Catalog # AI13424****Specification**

---

**ASZ1 antibody - middle region - Product Information**

Application	WB
Primary Accession	<a href="#">Q8WWH4</a>
Other Accession	<a href="#">NM_130768</a> , <a href="#">NP_570124</a>
Reactivity	Human, Mouse, Rat, Rabbit, Sheep, Horse, Bovine, Guinea Pig, Dog
Predicted	Human, Mouse, Rat, Rabbit, Pig, Sheep, Horse, Bovine, Guinea Pig, Dog
Host	Rabbit
Clonality	Polyclonal
Calculated MW	53kDa KDa

**ASZ1 antibody - middle region - Additional Information****Gene ID** 136991**Alias Symbol** **ALP1, ANKL1, C7orf7, GASZ, MGC26634, Orf3, CT1.19****Other Names**

Ankyrin repeat, SAM and basic leucine zipper domain-containing protein 1, Ankyrin-like protein 1, Germ cell-specific ankyrin, SAM and basic leucine zipper domain-containing protein, ASZ1 ([HGNC:1350](http://www.genenames.org/cgi-bin/gene_symbol_report?hgnc_id=1350))

**Format**

Liquid. Purified antibody supplied in 1x PBS buffer with 0.09% (w/v) sodium azide and 2% sucrose.

**Reconstitution & Storage**

Add 50 ul of distilled water. Final anti-ASZ1 antibody concentration is 1 mg/ml in PBS buffer with 2% sucrose. For longer periods of storage, store at 20°C. Avoid repeat freeze-thaw cycles.

**Precautions**

ASZ1 antibody - middle region is for research use only and not for use in diagnostic or therapeutic procedures.

**ASZ1 antibody - middle region - Protein Information****Name** ASZ1 ([HGNC:1350](#))**Function**

Plays a central role during spermatogenesis by repressing transposable elements and preventing their mobilization, which is essential for the germline integrity. Acts via the piRNA metabolic process, which mediates the repression of transposable elements during meiosis by forming

complexes composed of piRNAs and Piwi proteins and governs the methylation and subsequent repression of transposons. Its association with pi-bodies suggests a participation in the primary piRNAs metabolic process. Required prior to the pachytene stage to facilitate the production of multiple types of piRNAs, including those associated with repeats involved in the regulation of retrotransposons. May act by mediating protein-protein interactions during germ cell maturation (By similarity).

#### Cellular Location

Cytoplasm. Note=Component of the meiotic nuage, also named P granule, a germ-cell-specific organelle required to repress transposon activity during meiosis. Specifically localizes to pi-bodies, a subset of the nuage which contains primary piRNAs (By similarity).

#### Tissue Location

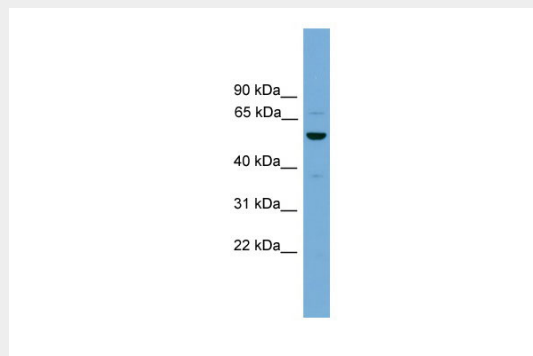
Expressed exclusively in the testis and ovary and at higher levels in the adult testis compared with the adult ovary

### ASZ1 antibody - middle region - Protocols

Provided below are standard protocols that you may find useful for product applications.

- [Western Blot](#)
- [Blocking Peptides](#)
- [Dot Blot](#)
- [Immunohistochemistry](#)
- [Immunofluorescence](#)
- [Immunoprecipitation](#)
- [Flow Cytometry](#)
- [Cell Culture](#)

### ASZ1 antibody - middle region - Images



WB Suggested Anti-ASZ1 Antibody Titration: 1.0 µg/ml  
Positive Control: THP-1 Whole Cell

### ASZ1 antibody - middle region - References

- Yan W., et al. Mol. Endocrinol. 16:1168-1184(2002).  
Ota T., et al. Nat. Genet. 36:40-45(2004).  
Scherer S.W., et al. Science 300:767-772(2003).