

TACC3 antibody - middle region
Rabbit Polyclonal Antibody
Catalog # AI13379**Specification**

TACC3 antibody - middle region - Product Information

| | |
|-------------------|--|
| Application | WB |
| Primary Accession | O9Y6A5 |
| Other Accession | NM_006342 , NP_006333 |
| Reactivity | Human, Mouse, Rat, Rabbit, Horse, Bovine, Guinea Pig, Dog |
| Predicted | Human, Mouse, Rat, Rabbit, Pig, Chicken, Horse, Bovine, Guinea Pig, Dog |
| Host | Rabbit |
| Clonality | Polyclonal |
| Calculated MW | 90kDa KDa |

TACC3 antibody - middle region - Additional Information**Gene ID** 10460**Alias Symbol** **ERIC1, MGC117382, MGC133242, ERIC-1****Other Names**

Transforming acidic coiled-coil-containing protein 3, ERIC-1, TACC3, ERIC1

Format

Liquid. Purified antibody supplied in 1x PBS buffer with 0.09% (w/v) sodium azide and 2% sucrose.

Reconstitution & Storage

Add 50 ul of distilled water. Final anti-TACC3 antibody concentration is 1 mg/ml in PBS buffer with 2% sucrose. For longer periods of storage, store at 20°C. Avoid repeat freeze-thaw cycles.

Precautions

TACC3 antibody - middle region is for research use only and not for use in diagnostic or therapeutic procedures.

TACC3 antibody - middle region - Protein Information**Name** TACC3**Synonyms** ERIC1**Function**

Plays a role in the microtubule-dependent coupling of the nucleus and the centrosome. Involved in the processes that regulate centrosome-mediated interkinetic nuclear migration (INM) of neural progenitors (By similarity). Acts as a component of the TACC3/ch-TOG/clathrin complex proposed to contribute to stabilization of kinetochore fibers of the mitotic spindle by acting as inter-microtubule bridge. The TACC3/ch-TOG/clathrin complex is required for the maintenance of

kinetochore fiber tension (PubMed:21297582, PubMed:23532825). May be involved in the control of cell growth and differentiation. May contribute to cancer (PubMed:14767476).

Cellular Location

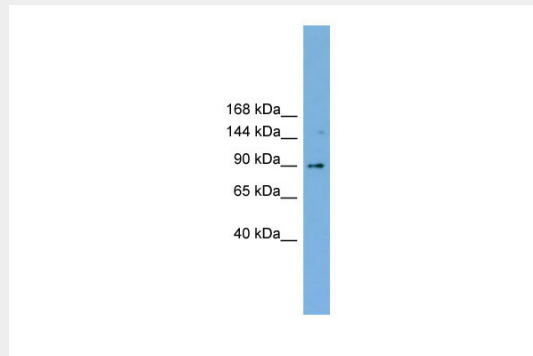
Cytoplasm. Cytoplasm, cytoskeleton, microtubule organizing center, centrosome. Cytoplasm, cytoskeleton, spindle. Cytoplasm, cytoskeleton, spindle pole {ECO:0000250|UniProtKB:Q9PTG8}. Note=In complex with CKAP5 localized to microtubule plus-ends in mitosis and interphase. In complex with CKAP5 and clathrin localized to inter-microtubule bridges in mitotic spindles.

TACC3 antibody - middle region - Protocols

Provided below are standard protocols that you may find useful for product applications.

- [Western Blot](#)
- [Blocking Peptides](#)
- [Dot Blot](#)
- [Immunohistochemistry](#)
- [Immunofluorescence](#)
- [Immunoprecipitation](#)
- [Flow Cytometry](#)
- [Cell Culture](#)

TACC3 antibody - middle region - Images



WB Suggested Anti-TACC3 Antibody Titration: 0.2-1 µg/ml
ELISA Titer: 1:1562500
Positive Control: NCI-H226 cell lysate

TACC3 antibody - middle region - References

Still I.H., et al. Genomics 58:165-170(1999).
McKeveney P.J., et al. Br. J. Haematol. 112:1016-1024(2001).
Gangisetty O., et al. Oncogene 23:2559-2563(2004).
Beausoleil S.A., et al. Nat. Biotechnol. 24:1285-1292(2006).
Cantin G.T., et al. J. Proteome Res. 7:1346-1351(2008).