

Plk3 antibody - C-terminal region
Rabbit Polyclonal Antibody
Catalog # AI13358

Specification

Plk3 antibody - C-terminal region - Product Information

Application	WB
Primary Accession	Q60806.2
Other Accession	NM_013807 , NP_038835
Reactivity	Human, Mouse, Rat, Rabbit, Pig, Horse, Bovine, Guinea Pig, Dog
Predicted	Human, Mouse, Rat, Rabbit, Pig, Horse, Bovine, Dog
Host	Rabbit
Clonality	Polyclonal
Calculated MW	55kDa KDa

Plk3 antibody - C-terminal region - Additional Information

Alias Symbol Cnk, Fnk, PRK

Format

Liquid. Purified antibody supplied in 1x PBS buffer with 0.09% (w/v) sodium azide and 2% sucrose.

Reconstitution & Storage

Add 50 ul of distilled water. Final anti-Plk3 antibody concentration is 1 mg/ml in PBS buffer with 2% sucrose. For longer periods of storage, store at 20°C. Avoid repeat freeze-thaw cycles.

Precautions

Plk3 antibody - C-terminal region is for research use only and not for use in diagnostic or therapeutic procedures.

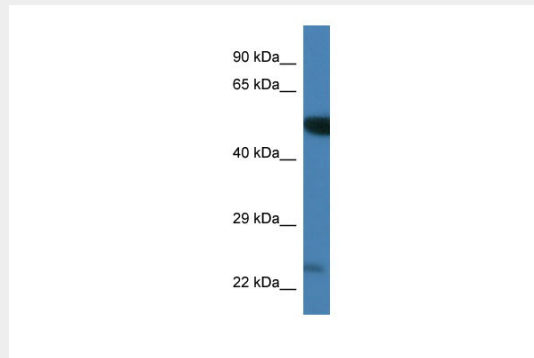
Plk3 antibody - C-terminal region - Protein Information

Plk3 antibody - C-terminal region - Protocols

Provided below are standard protocols that you may find useful for product applications.

- [Western Blot](#)
- [Blocking Peptides](#)
- [Dot Blot](#)
- [Immunohistochemistry](#)
- [Immunofluorescence](#)
- [Immunoprecipitation](#)
- [Flow Cytometry](#)
- [Cell Culture](#)

Plk3 antibody - C-terminal region - Images



WB Suggested Anti-Plk3 Antibody Titration: 1.0 $\mu\text{g/ml}$
Positive Control: Mouse Brain