

EBF4 antibody - C-terminal region
Rabbit Polyclonal Antibody
Catalog # AI13322**Specification**

EBF4 antibody - C-terminal region - Product Information

Application	WB
Primary Accession	O9BOW3
Other Accession	XM_044921 , XP_044921
Reactivity	Human, Mouse
Predicted	Human, Rat
Host	Rabbit
Clonality	Polyclonal
Calculated MW	68kDa KDa

EBF4 antibody - C-terminal region - Additional Information**Gene ID** 57593**Alias Symbol** COE4, KIAA1442, O/E-4, RP5-860F19.3**Other Names**

Transcription factor COE4, Early B-cell factor 4, EBF-4, Olf-1/EBF-like 4, O/E-4, OE-4, EBF4, COE4, KIAA1442

Format

Liquid. Purified antibody supplied in 1x PBS buffer with 0.09% (w/v) sodium azide and 2% sucrose.

Reconstitution & Storage

Add 50 ul of distilled water. Final anti-EBF4 antibody concentration is 1 mg/ml in PBS buffer with 2% sucrose. For longer periods of storage, store at 20°C. Avoid repeat freeze-thaw cycles.

Precautions

EBF4 antibody - C-terminal region is for research use only and not for use in diagnostic or therapeutic procedures.

EBF4 antibody - C-terminal region - Protein Information**Name** EBF4**Synonyms** COE4, KIAA1442**Function**Transcription factor (PubMed:[35939714](http://www.uniprot.org/citations/35939714)). Binds to specific sequence motif 5'-CCCNNG[GA]G-3' in regulatory elements of putative target immunoregulatory genes such as NKG7, GZMA, and TBX21 (PubMed:[35939714](http://www.uniprot.org/citations/35939714)). Positively modulates transcription of NKG7 (PubMed:[35939714](http://www.uniprot.org/citations/35939714)). May play a

role in regulating FAS/CD95-mediated apoptosis in cytotoxic NK cells and T-cells, probably downstream of interleukin IL2 signaling (PubMed:35939714).

Cellular Location

Nucleus.

Tissue Location

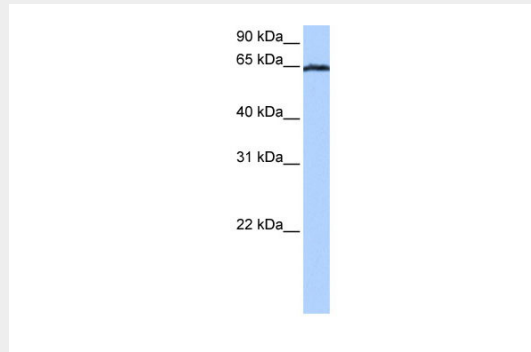
Most highly expressed in cytotoxic NK cells, especially CD16(+) NK cells, followed by CD8(+) T-cells

EBF4 antibody - C-terminal region - Protocols

Provided below are standard protocols that you may find useful for product applications.

- [Western Blot](#)
- [Blocking Peptides](#)
- [Dot Blot](#)
- [Immunohistochemistry](#)
- [Immunofluorescence](#)
- [Immunoprecipitation](#)
- [Flow Cytometry](#)
- [Cell Culture](#)

EBF4 antibody - C-terminal region - Images



WB Suggested Anti-EBF4 Antibody Titration: 0.2-1 µg/ml

Positive Control: Jurkat cell lysate

EBF4 antibody - C-terminal region - References

Deloukas P., et al. Nature 414:865-871(2001).

Nagase T., et al. DNA Res. 7:65-73(2000).