

DEPDC7 antibody - N-terminal region
Rabbit Polyclonal Antibody
Catalog # AI13313**Specification**

DEPDC7 antibody - N-terminal region - Product Information

Application	WB
Primary Accession	O95JW3
Other Accession	NM_139160 , NP_631899
Reactivity	Human, Mouse, Rat, Rabbit, Pig, Horse, Bovine, Guinea Pig, Dog
Predicted	Human, Rabbit, Horse, Bovine, Guinea Pig, Dog
Host	Rabbit
Clonality	Polyclonal
Calculated MW	58 KDa

DEPDC7 antibody - N-terminal region - Additional Information

Alias Symbol	dj85M6.4, TR2
Other Names	
DEP domain-containing protein 7, DEPDC7	

Format

Liquid. Purified antibody supplied in 1x PBS buffer with 0.09% (w/v) sodium azide and 2% sucrose.

Reconstitution & Storage

Add 50 ul of distilled water. Final anti-DEPDC7 antibody concentration is 1 mg/ml in PBS buffer with 2% sucrose. For longer periods of storage, store at 20°C. Avoid repeat freeze-thaw cycles.

Precautions

DEPDC7 antibody - N-terminal region is for research use only and not for use in diagnostic or therapeutic procedures.

DEPDC7 antibody - N-terminal region - Protein Information

Name DEPDC7

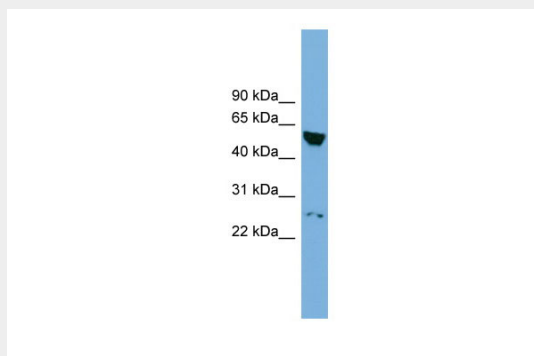
DEPDC7 antibody - N-terminal region - Protocols

Provided below are standard protocols that you may find useful for product applications.

- [Western Blot](#)
- [Blocking Peptides](#)
- [Dot Blot](#)
- [Immunohistochemistry](#)

- [Immunofluorescence](#)
- [Immunoprecipitation](#)
- [Flow Cytometry](#)
- [Cell Culture](#)

DEPDC7 antibody - N-terminal region - Images



WB Suggested Anti-DEPDC7 Antibody Titration: 0.2-1 μ g/ml
ELISA Titer: 1:1562500
Positive Control: NCI-H226 cell lysate

DEPDC7 antibody - N-terminal region - References

Osada N., et al. BMC Genomics 3:36-36(2002).