

**CACYBP antibody - middle region**  
**Rabbit Polyclonal Antibody**  
**Catalog # AI13288****Specification**

---

**CACYBP antibody - middle region - Product Information**

Application	WB
Primary Accession	<a href="#">O9HB71</a>
Other Accession	<a href="#">NM_014412</a> , <a href="#">NP_055227</a>
Reactivity	Human, Mouse, Rat, Rabbit, Pig, Horse, Bovine, Guinea Pig, Dog
Predicted	Human, Rabbit, Chicken, Horse, Guinea Pig, Dog
Host	Rabbit
Clonality	Polyclonal
Calculated MW	26kDa KDa

**CACYBP antibody - middle region - Additional Information****Gene ID** 27101**Alias Symbol** GIG5, MGC87971, PNAS-107, RP1-102G20.6, S100A6BP, SIP**Other Names**

Calcyclin-binding protein, CacyBP, hCacyBP, S100A6-binding protein, Siah-interacting protein, CACYBP, S100A6BP, SIP

**Format**

Liquid. Purified antibody supplied in 1x PBS buffer with 0.09% (w/v) sodium azide and 2% sucrose.

**Reconstitution & Storage**

Add 100 ul of distilled water. Final anti-CACYBP antibody concentration is 1 mg/ml in PBS buffer with 2% sucrose. For longer periods of storage, store at 20°C. Avoid repeat freeze-thaw cycles.

**Precautions**

CACYBP antibody - middle region is for research use only and not for use in diagnostic or therapeutic procedures.

**CACYBP antibody - middle region - Protein Information****Name** CACYBP**Synonyms** S100A6BP, SIP**Function**

May be involved in calcium-dependent ubiquitination and subsequent proteasomal degradation of target proteins. Probably serves as a molecular bridge in ubiquitin E3 complexes. Participates in the ubiquitin-mediated degradation of beta-catenin (CTNNB1).

### Cellular Location

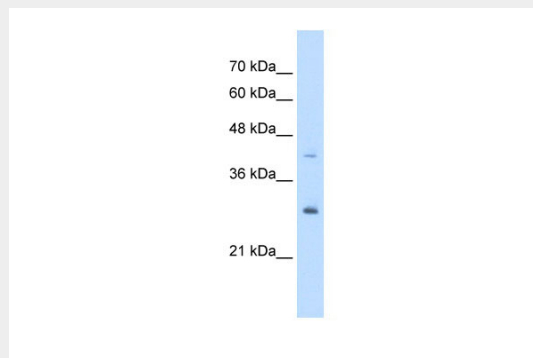
Nucleus. Cytoplasm. Note=Cytoplasmic at low calcium concentrations. In neuroblastoma cells, after a retinoic acid (RA) induction and calcium increase, it localizes in both the nucleus and cytoplasm. The nuclear fraction may be phosphorylated

### CACYBP antibody - middle region - Protocols

Provided below are standard protocols that you may find useful for product applications.

- [Western Blot](#)
- [Blocking Peptides](#)
- [Dot Blot](#)
- [Immunohistochemistry](#)
- [Immunofluorescence](#)
- [Immunoprecipitation](#)
- [Flow Cytometry](#)
- [Cell Culture](#)

### CACYBP antibody - middle region - Images



WB Suggested Anti-CACYBP Antibody Titration: 5.0 $\mu$ g/ml  
Positive Control: HepG2 cell lysate