

PHF6 antibody - N-terminal region
Rabbit Polyclonal Antibody
Catalog # AI13285

Specification

PHF6 antibody - N-terminal region - Product Information

Application	WB
Primary Accession	Q8IWS0
Other Accession	NM_032458 , NP_115834
Reactivity	Human, Mouse, Rat, Rabbit, Pig, Horse, Bovine, Guinea Pig, Dog
Predicted	Human, Mouse, Rabbit, Pig, Chicken, Horse, Bovine, Guinea Pig, Dog
Host	Rabbit
Clonality	Polyclonal
Calculated MW	41kDa KDa

PHF6 antibody - N-terminal region - Additional Information

Gene ID 84295

Alias Symbol **BORJ, MGC14797, BFLS, CENP-31**

Other Names

PHD finger protein 6, PHD-like zinc finger protein, PHF6, CENP-31, KIAA1823

Format

Liquid. Purified antibody supplied in 1x PBS buffer with 0.09% (w/v) sodium azide and 2% sucrose.

Reconstitution & Storage

Add 100 ul of distilled water. Final anti-PHF6 antibody concentration is 1 mg/ml in PBS buffer with 2% sucrose. For longer periods of storage, store at 20°C. Avoid repeat freeze-thaw cycles.

Precautions

PHF6 antibody - N-terminal region is for research use only and not for use in diagnostic or therapeutic procedures.

PHF6 antibody - N-terminal region - Protein Information

Name PHF6

Synonyms CENP-31, KIAA1823

Function

Transcriptional regulator that associates with ribosomal RNA promoters and suppresses ribosomal RNA (rRNA) transcription.

Cellular Location

Nucleus. Nucleus, nucleolus. Chromosome, centromere, kinetochore. Note=Nuclear, it particularly

localizes to the nucleolus

Tissue Location

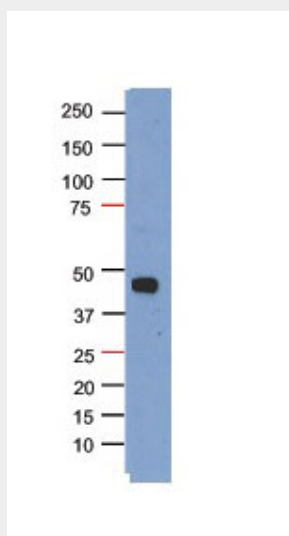
Ubiquitously expressed.

PHF6 antibody - N-terminal region - Protocols

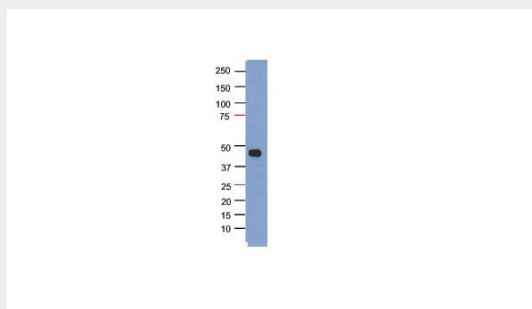
Provided below are standard protocols that you may find useful for product applications.

- [Western Blot](#)
- [Blocking Peptides](#)
- [Dot Blot](#)
- [Immunohistochemistry](#)
- [Immunofluorescence](#)
- [Immunoprecipitation](#)
- [Flow Cytometry](#)
- [Cell Culture](#)

PHF6 antibody - N-terminal region - Images



WB Suggested Anti-PHF6 Antibody Titration: 5.0µg/ml
Positive Control: Jurkat cell lysate



Sample Type: HEK293T cells transfected with a plasmid for over expression of myc-tagged PHF6
Primary Dilution: 1:1000
Secondary (goat anti-rabbit HRP) Dilution: 1:1000

PHF6 antibody - N-terminal region - References

Lower K.M.,et al.Nat. Genet. 32:661-665(2002).

Nagase T.,et al.DNA Res. 8:85-95(2001).

Ota T.,et al.Nat. Genet. 36:40-45(2004).

Ross M.T.,et al.Nature 434:325-337(2005).

Mural R.J.,et al.Submitted (SEP-2005) to the EMBL/GenBank/DDBJ databases.