

OLFM4 antibody - C-terminal region
Rabbit Polyclonal Antibody
Catalog # AI13279**Specification**

OLFM4 antibody - C-terminal region - Product Information

Application	WB
Primary Accession	Q6UX06
Other Accession	NM_006418 , NP_006409
Reactivity	Human, Rat, Rabbit, Horse, Bovine, Guinea Pig, Dog
Predicted	Human, Rabbit, Horse, Bovine, Guinea Pig, Dog
Host	Rabbit
Clonality	Polyclonal
Calculated MW	55kDa KDa

OLFM4 antibody - C-terminal region - Additional Information**Gene ID** 10562**Alias Symbol** [GC1](#), [GW112](#), [KIAA4294](#), [Olfd](#), [bA209J19.1](#), [OLM4](#), [hGC-1](#), [hOLfD](#), [UNQ362](#)**Other Names**

Olfactomedin-4, OLM4, Antiapoptotic protein GW112, G-CSF-stimulated clone 1 protein, hGC-1, hOLfD, OLFM4, GW112

Format

Liquid. Purified antibody supplied in 1x PBS buffer with 0.09% (w/v) sodium azide and 2% sucrose.

Reconstitution & Storage

Add 100 ul of distilled water. Final anti-OLFM4 antibody concentration is 1 mg/ml in PBS buffer with 2% sucrose. For longer periods of storage, store at 20°C. Avoid repeat freeze-thaw cycles.

Precautions

OLFM4 antibody - C-terminal region is for research use only and not for use in diagnostic or therapeutic procedures.

OLFM4 antibody - C-terminal region - Protein Information**Name** OLFM4**Synonyms** GW112**Function**

May promote proliferation of pancreatic cancer cells by favoring the transition from the S to G2/M phase. In myeloid leukemic cell lines, inhibits cell growth and induces cell differentiation and apoptosis. May play a role in the inhibition of EIF4EBP1 phosphorylation/deactivation. Facilitates

cell adhesion, most probably through interaction with cell surface lectins and cadherin.

Cellular Location

Secreted, extracellular space. Mitochondrion. Note=Subcellular location is not clearly defined: has been shown to be secreted (PubMed:16566923), but also in the mitochondrion (PubMed:15059901, PubMed:20724538), cytoplasm and plasma membrane (PubMed:20724538) and in the nucleus (PubMed:15059901)

Tissue Location

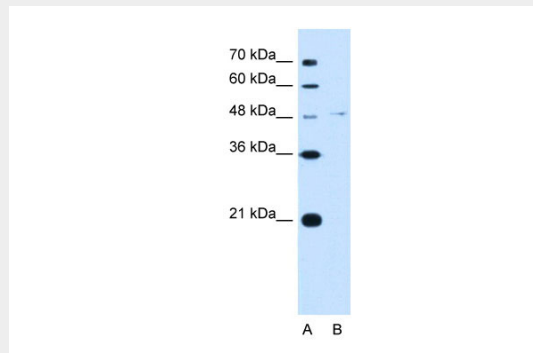
Expressed during myeloid lineage development. Much higher expression in bone marrow neutrophils than in peripheral blood neutrophils (at protein level). Strongly expressed in the prostate, small intestine and colon and moderately expressed in the bone marrow and stomach. Overexpressed in some pancreatic cancer tissues

OLFM4 antibody - C-terminal region - Protocols

Provided below are standard protocols that you may find useful for product applications.

- [Western Blot](#)
- [Blocking Peptides](#)
- [Dot Blot](#)
- [Immunohistochemistry](#)
- [Immunofluorescence](#)
- [Immunoprecipitation](#)
- [Flow Cytometry](#)
- [Cell Culture](#)

OLFM4 antibody - C-terminal region - Images



WB Suggested Anti-OLFM4 Antibody Titration: 5.0µg/ml
Positive Control: Jurkat cell lysate

OLFM4 antibody - C-terminal region - References

- Clark H.F., et al. *Genome Res.* 13:2265-2270(2003).
Dunham A., et al. *Nature* 428:522-528(2004).
Mural R.J., et al. Submitted (JUL-2005) to the EMBL/GenBank/DDBJ databases.
Zhang J., et al. *Gene* 283:83-93(2002).
Zhang X., et al. *Cancer Res.* 64:2474-2481(2004).