

RSRC2 antibody - C-terminal region
Rabbit Polyclonal Antibody
Catalog # AI13278**Specification**

RSRC2 antibody - C-terminal region - Product Information

Application	IHC, WB
Primary Accession	O7L4I2
Other Accession	NM_023012 , NP_075388
Reactivity	Human, Mouse, Rat, Rabbit, Pig, Horse, Bovine, Guinea Pig, Dog
Predicted	Human, Mouse, Rat, Rabbit, Pig, Chicken, Horse, Bovine, Guinea Pig, Dog
Host	Rabbit
Clonality	Polyclonal
Calculated MW	50kDa KDa

RSRC2 antibody - C-terminal region - Additional Information**Gene ID** 65117

Alias Symbol	FLJ11021
Other Names	
Arginine/serine-rich coiled-coil protein 2, RSRC2	

Format

Liquid. Purified antibody supplied in 1x PBS buffer with 0.09% (w/v) sodium azide and 2% sucrose.

Reconstitution & Storage

Add 100 ul of distilled water. Final anti-RSRC2 antibody concentration is 1 mg/ml in PBS buffer with 2% sucrose. For longer periods of storage, store at 20°C. Avoid repeat freeze-thaw cycles.

Precautions

RSRC2 antibody - C-terminal region is for research use only and not for use in diagnostic or therapeutic procedures.

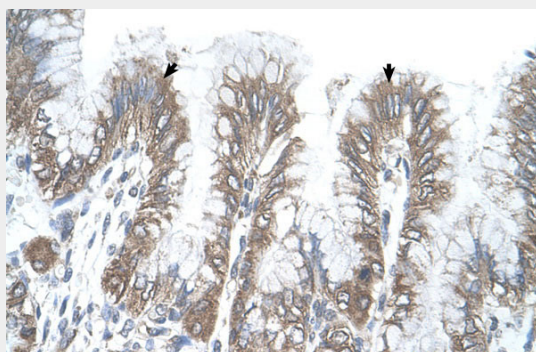
RSRC2 antibody - C-terminal region - Protein Information**Name** RSRC2**RSRC2 antibody - C-terminal region - Protocols**

Provided below are standard protocols that you may find useful for product applications.

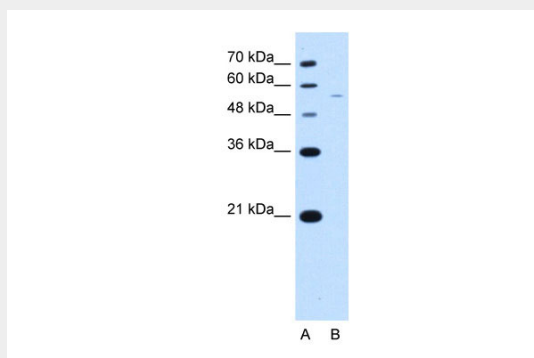
- [Western Blot](#)
- [Blocking Peptides](#)

- [Dot Blot](#)
- [Immunohistochemistry](#)
- [Immunofluorescence](#)
- [Immunoprecipitation](#)
- [Flow Cytometry](#)
- [Cell Culture](#)

RSRC2 antibody - C-terminal region - Images



Human Stomach



WB Suggested Antibody Titration: 2.5 μ g/ml

Positive Control: JurkatRSRC2 is strongly supported by BioGPS gene expression data to be expressed in Human Jurkat cells