

ZMAT3 antibody - N-terminal region
Rabbit Polyclonal Antibody
Catalog # AI13228

Specification

ZMAT3 antibody - N-terminal region - Product Information

Application	WB
Primary Accession	O9HA38
Other Accession	NM_152240 , NP_689426
Reactivity	Human, Mouse, Rat, Rabbit, Horse, Bovine, Guinea Pig, Dog
Predicted	Human, Mouse, Rat, Rabbit, Chicken, Bovine, Dog
Host	Rabbit
Clonality	Polyclonal
Calculated MW	32kDa KDa

ZMAT3 antibody - N-terminal region - Additional Information

Gene ID 64393

Alias Symbol [FLJ12296](#), [MGC10613](#), [PAG608](#), [WIG-1](#), [WIG1](#)

Other Names

Zinc finger matrin-type protein 3, Zinc finger protein WIG-1, p53-activated gene 608 protein, ZMAT3 {ECO:0000312|EMBL:AAH02896.1}

Format

Liquid. Purified antibody supplied in 1x PBS buffer with 0.09% (w/v) sodium azide and 2% sucrose.

Reconstitution & Storage

Add 50 ul of distilled water. Final anti-ZMAT3 antibody concentration is 1 mg/ml in PBS buffer with 2% sucrose. For longer periods of storage, store at 20°C. Avoid repeat freeze-thaw cycles.

Precautions

ZMAT3 antibody - N-terminal region is for research use only and not for use in diagnostic or therapeutic procedures.

ZMAT3 antibody - N-terminal region - Protein Information

Name ZMAT3 {ECO:0000312|EMBL:AAH02896.1}

Function

Acts as a bona fide target gene of p53/TP53. May play a role in the TP53-dependent growth regulatory pathway. May contribute to TP53-mediated apoptosis by regulation of TP53 expression and translocation to the nucleus and nucleolus.

Cellular Location

Nucleus. Nucleus, nucleolus

Tissue Location

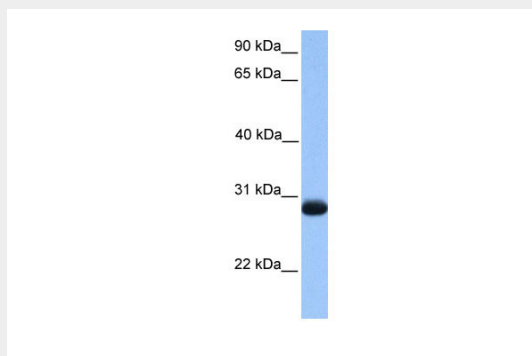
Highly expressed in adult brain, and moderately in adult kidney and testis. Not detected in fetal brain, heart, pancreas, adrenal gland, liver or small intestine.

ZMAT3 antibody - N-terminal region - Protocols

Provided below are standard protocols that you may find useful for product applications.

- [Western Blot](#)
- [Blocking Peptides](#)
- [Dot Blot](#)
- [Immunohistochemistry](#)
- [Immunofluorescence](#)
- [Immunoprecipitation](#)
- [Flow Cytometry](#)
- [Cell Culture](#)

ZMAT3 antibody - N-terminal region - Images



WB Suggested Anti-ZMAT3 Antibody Titration: 0.2-1 $\mu\text{g/ml}$
Positive Control: Human Muscle

ZMAT3 antibody - N-terminal region - References

- Varmeh-Ziaie S., et al. *Cancer Lett.* 174:179-187(2001).
Hellborg F., et al. *Oncogene* 20:5466-5474(2001).
Ota T., et al. *Nat. Genet.* 36:40-45(2004).
Muzny D.M., et al. *Nature* 440:1194-1198(2006).
Mural R.J., et al. Submitted (SEP-2005) to the EMBL/GenBank/DDBJ databases.