

CYTB antibody - N-terminal region
Rabbit Polyclonal Antibody
Catalog # AI13155**Specification**

CYTB antibody - N-terminal region - Product Information

Application	WB
Primary Accession	P00156
Other Accession	P00156 , NP_536855
Reactivity	Human, Mouse, Rat
Host	Rabbit
Clonality	Polyclonal
Calculated MW	42kDa KDa

CYTB antibody - N-terminal region - Additional Information**Gene ID** 4519**Alias Symbol** MTCYB**Other Names**

Cytochrome b, Complex III subunit 3, Complex III subunit III, Cytochrome b-c1 complex subunit 3, Ubiquinol-cytochrome-c reductase complex cytochrome b subunit, MT-CYB, COB, CYTB, MTCYB

Format

Liquid. Purified antibody supplied in 1x PBS buffer with 0.09% (w/v) sodium azide and 2% sucrose.

Reconstitution & Storage

Add 50 ul of distilled water. Final anti-CYTB antibody concentration is 1 mg/ml in PBS buffer with 2% sucrose. For longer periods of storage, store at 20°C. Avoid repeat freeze-thaw cycles.

Precautions

CYTB antibody - N-terminal region is for research use only and not for use in diagnostic or therapeutic procedures.

CYTB antibody - N-terminal region - Protein Information**Name** MT-CYB**Synonyms** COB, CYTB, MTCYB**Function**

Component of the ubiquinol-cytochrome c reductase complex (complex III or cytochrome b-c1 complex) that is part of the mitochondrial respiratory chain. The b-c1 complex mediates electron transfer from ubiquinol to cytochrome c. Contributes to the generation of a proton gradient across the mitochondrial membrane that is then used for ATP synthesis.

Cellular Location

Mitochondrion inner membrane {ECO:0000250|UniProtKB:P00157}; Multi-pass membrane protein

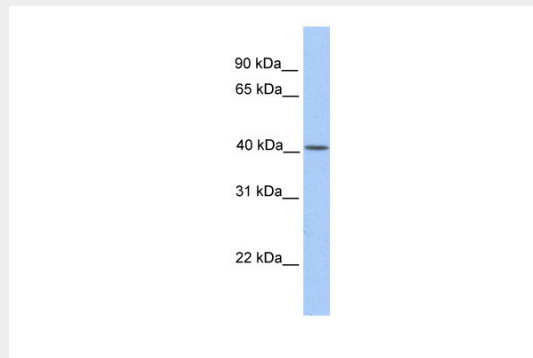
{ECO:0000250|UniProtKB:P00157}

CYTB antibody - N-terminal region - Protocols

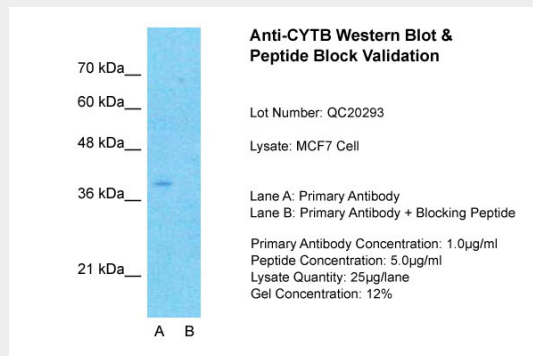
Provided below are standard protocols that you may find useful for product applications.

- [Western Blot](#)
- [Blocking Peptides](#)
- [Dot Blot](#)
- [Immunohistochemistry](#)
- [Immunofluorescence](#)
- [Immunoprecipitation](#)
- [Flow Cytometry](#)
- [Cell Culture](#)

CYTB antibody - N-terminal region - Images



WB Suggested Anti-CYTB Antibody Titration: 0.2-1 $\mu\text{g/ml}$
Positive Control: Hela cell lysate



Host: Rabbit
Target Name: CYTB
Sample Tissue: MCF7
Lane A: Primary Antibody
Lane B: Primary Antibody + Blocking Peptide
Primary Antibody
Concentration: 1 $\mu\text{g/ml}$
Peptide Concentration: 5 $\mu\text{g/ml}$
Lysate Quantity: 25 $\mu\text{g/lane/lane}$ Gel

Concentration: 0.12