

PPAPDC1B antibody - middle region
Rabbit Polyclonal Antibody
Catalog # AI13123

Specification

PPAPDC1B antibody - middle region - Product Information

Application	WB
Primary Accession	Q8NEB5
Other Accession	NM_001102559 , NP_001096029
Reactivity	Human, Mouse, Rat, Rabbit, Pig, Horse, Bovine, Guinea Pig, Dog
Predicted	Human, Mouse, Rat, Bovine, Guinea Pig, Dog
Host	Rabbit
Clonality	Polyclonal
Calculated MW	29kDa kDa

PPAPDC1B antibody - middle region - Additional Information

Gene ID 84513

Alias Symbol DPPL1, HTPAP

Other Names

Phosphatidate phosphatase PPAPDC1B, 3.1.3.4, Phosphatidic acid phosphatase type 2 domain-containing protein 1B, PPAPDC1B, DPPL1, HTPAP

Format

Liquid. Purified antibody supplied in 1x PBS buffer with 0.09% (w/v) sodium azide and 2% sucrose.

Reconstitution & Storage

Add 50 ul of distilled water. Final anti-PPAPDC1B antibody concentration is 1 mg/ml in PBS buffer with 2% sucrose. For longer periods of storage, store at 20°C. Avoid repeat freeze-thaw cycles.

Precautions

PPAPDC1B antibody - middle region is for research use only and not for use in diagnostic or therapeutic procedures.

PPAPDC1B antibody - middle region - Protein Information

Name PLPP5 ([HGNC:25026](#))

Function

Magnesium-independent phospholipid phosphatase with broad substrate specificity (PubMed:[17590538](http://www.uniprot.org/citations/17590538)). Preferentially catalyzes the conversion of diacylglycerol pyrophosphate into phosphatidate but can also act on phosphatidate and lysophosphatidate (PubMed:[17590538](http://www.uniprot.org/citations/17590538)). Phospholipid phosphatases are involved in both the synthesis of lipids and the generation or degradation of

lipid-signaling molecules (PubMed: 17590538).

Cellular Location

Cell membrane; Multi-pass membrane protein {ECO:0000250|UniProtKB:Q3UMZ3}

Tissue Location

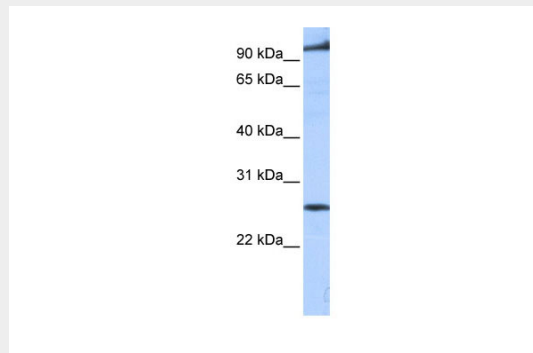
Ubiquitous..

PPAPDC1B antibody - middle region - Protocols

Provided below are standard protocols that you may find useful for product applications.

- [Western Blot](#)
- [Blocking Peptides](#)
- [Dot Blot](#)
- [Immunohistochemistry](#)
- [Immunofluorescence](#)
- [Immunoprecipitation](#)
- [Flow Cytometry](#)
- [Cell Culture](#)

PPAPDC1B antibody - middle region - Images



WB Suggested Anti-PPAPDC1B Antibody Titration: 0.2-1 μ g/ml
Positive Control: Human brain

PPAPDC1B antibody - middle region - References

Takeuchi M., et al. Gene 399:174-180(2007).
Nusbaum C., et al. Nature 439:331-335(2006).
Li Y., et al. Submitted (DEC-1999) to the EMBL/GenBank/DDBJ databases.
Wu X., et al. Oncogene 25:1832-1840(2006).