

**SYT3 antibody - N-terminal region**  
**Rabbit Polyclonal Antibody**  
**Catalog # AI13121****Specification**

---

**SYT3 antibody - N-terminal region - Product Information**

|                   |  |
|-------------------|--|
| Application       | WB   |
| Primary Accession | <a href="#">O9BOG1</a>                                 |
| Other Accession   | <a href="#">NM_032298</a> , <a href="#">NP_115674</a>  |
| Reactivity        | Human, Mouse, Rat, Pig, Horse, Bovine, Guinea Pig, Dog |
| Predicted         | Human, Mouse, Rat, Pig, Horse, Bovine, Guinea Pig, Dog |
| Host              | Rabbit   |
| Clonality         | Polyclonal   |
| Calculated MW     | 63kDa KDa  |

**SYT3 antibody - N-terminal region - Additional Information****Gene ID** 84258**Alias Symbol** [DKFZp7610132](#), SytIII  
**Other Names**  
Synaptotagmin-3, Synaptotagmin III, SytIII, SYT3**Format**

Liquid. Purified antibody supplied in 1x PBS buffer with 0.09% (w/v) sodium azide and 2% sucrose.

**Reconstitution & Storage**

Add 50 ul of distilled water. Final anti-SYT3 antibody concentration is 1 mg/ml in PBS buffer with 2% sucrose. For longer periods of storage, store at 20°C. Avoid repeat freeze-thaw cycles.

**Precautions**

SYT3 antibody - N-terminal region is for research use only and not for use in diagnostic or therapeutic procedures.

**SYT3 antibody - N-terminal region - Protein Information****Name** SYT3**Function**

Ca(2+) sensor involved in Ca(2+)-dependent exocytosis of secretory vesicles through Ca(2+) and phospholipid binding to the C2 domain. Ca(2+) induces binding of the C2-domains to phospholipid membranes and to assembled SNARE-complexes; both actions contribute to triggering exocytosis (By similarity). Plays a role in dendrite formation by melanocytes (PubMed:&lt;a href="http://www.uniprot.org/citations/23999003" target="\_blank"&gt;23999003&lt;/a&gt;).

**Cellular Location**

Cell membrane {ECO:0000250|UniProtKB:P40748}; Single-pass membrane protein. Cytoplasmic vesicle, secretory vesicle membrane; Single-pass membrane protein

#### Tissue Location

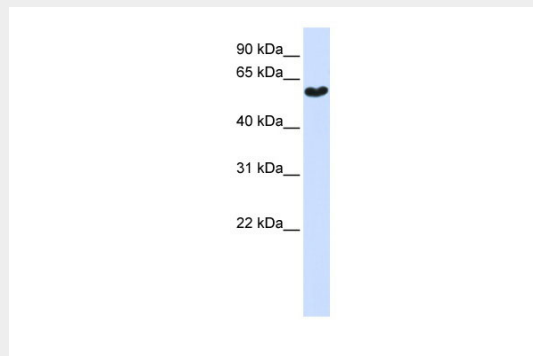
Expressed in melanocytes (PubMed:23999003).

#### SYT3 antibody - N-terminal region - Protocols

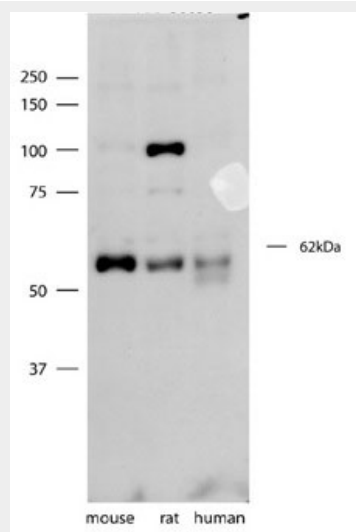
Provided below are standard protocols that you may find useful for product applications.

- [Western Blot](#)
- [Blocking Peptides](#)
- [Dot Blot](#)
- [Immunohistochemistry](#)
- [Immunofluorescence](#)
- [Immunoprecipitation](#)
- [Flow Cytometry](#)
- [Cell Culture](#)

#### SYT3 antibody - N-terminal region - Images



WB Suggested Anti-SYT3 Antibody Titration: 0.2-1  $\mu$ g/ml  
ELISA Titer: 1:62500  
Positive Control: 293T cell lysate



SYT3 antibody - N-terminal region (A113121) validated by WB using mouse, rat, and human brain lysates at 1 $\mu$ g/ml.

**SYT3 antibody - N-terminal region - References**

Wiemann S., et al. Genome Res. 11:422-435(2001).  
Sjoeblohm T., et al. Science 314:268-274(2006).