

MANEA antibody - middle region
Rabbit Polyclonal Antibody
Catalog # AI13093

Specification

MANEA antibody - middle region - Product Information

Application	WB
Primary Accession	O5SRI9
Other Accession	NM_024641 , NP_078917
Reactivity	Human, Mouse, Rat, Rabbit, Pig, Horse, Dog
Predicted Host	Human, Mouse, Rat, Chicken, Horse, Dog
Clonality	Rabbit
Calculated MW	Polyclonal 54kDa KDa

MANEA antibody - middle region - Additional Information

Gene ID 79694

Alias Symbol DKFZp686D20120, FLJ12838, hEndo, ENDO
Other Names
Glycoprotein endo-alpha-1, 2-mannosidase, Endo-alpha mannosidase, Endomannosidase, hEndo, 3.2.1.130, Mandaselin, MANEA

Format

Liquid. Purified antibody supplied in 1x PBS buffer with 0.09% (w/v) sodium azide and 2% sucrose.

Reconstitution & Storage

Add 50 ul of distilled water. Final anti-MANEA antibody concentration is 1 mg/ml in PBS buffer with 2% sucrose. For longer periods of storage, store at 20°C. Avoid repeat freeze-thaw cycles.

Precautions

MANEA antibody - middle region is for research use only and not for use in diagnostic or therapeutic procedures.

MANEA antibody - middle region - Protein Information

Name MANEA

Cellular Location

Golgi apparatus membrane; Single-pass type II membrane protein

Tissue Location

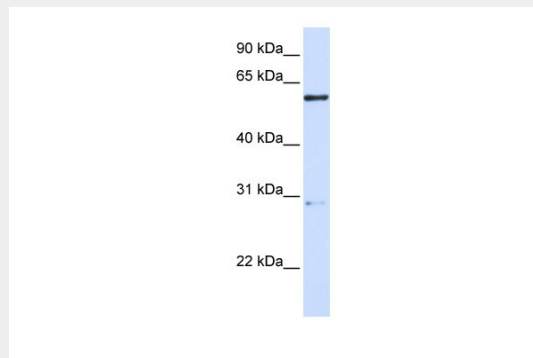
Highly expressed in the liver and kidney. Expressed at lower levels in muscle, pancreas, heart, placenta, lung and brain

MANEA antibody - middle region - Protocols

Provided below are standard protocols that you may find useful for product applications.

- [Western Blot](#)
- [Blocking Peptides](#)
- [Dot Blot](#)
- [Immunohistochemistry](#)
- [Immunofluorescence](#)
- [Immunoprecipitation](#)
- [Flow Cytometry](#)
- [Cell Culture](#)

MANEA antibody - middle region - Images

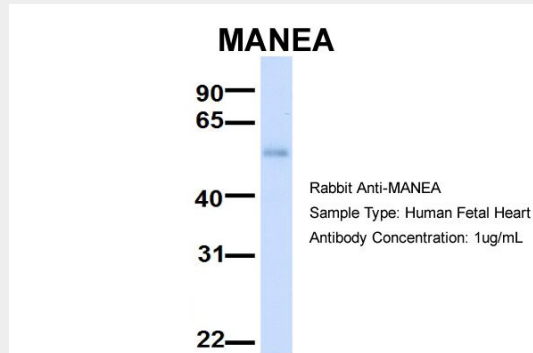


WB Suggested Anti-MANEA Antibody Titration: 0.2-1 µg/ml

ELISA Titer: 1:312500

Positive Control: 293T cell lysate

MANEA is supported by BioGPS gene expression data to be expressed in HEK293T



Host: Rabbit

Target Name: MANEA

Sample Tissue: Human Fetal Heart

Antibody Dilution: 1.0µg/ml

MANEA antibody - middle region - References

- Hardt B., et al. *Biochimie* 87:169-179(2005).
Hamilton S.R., et al. *Glycobiology* 15:615-624(2005).
Ota T., et al. *Nat. Genet.* 36:40-45(2004).
Bechtel S., et al. *BMC Genomics* 8:399-399(2007).
Mungall A.J., et al. *Nature* 425:805-811(2003).