

STEAP4 antibody - C-terminal region
Rabbit Polyclonal Antibody
Catalog # AI13090

Specification

STEAP4 antibody - C-terminal region - Product Information

Application	WB
Primary Accession	Q687X5
Other Accession	NM_024636 , NP_078912
Reactivity	Human, Rabbit, Bovine
Predicted	Rabbit
Host	Rabbit
Clonality	Polyclonal
Calculated MW	52kDa KDa

STEAP4 antibody - C-terminal region - Additional Information

Gene ID 79689

Alias Symbol DKFZp666D049, FLJ23153, STAMP2, TIARP, TNFAIP9

Other Names

Metalloreductase STEAP4, 1.16.1.-, Six-transmembrane epithelial antigen of prostate 4, SixTransMembrane protein of prostate 2, Tumor necrosis factor, alpha-induced protein 9, STEAP4, STAMP2, TNFAIP9

Format

Liquid. Purified antibody supplied in 1x PBS buffer with 0.09% (w/v) sodium azide and 2% sucrose.

Reconstitution & Storage

Add 50 ul of distilled water. Final anti-STEAP4 antibody concentration is 1 mg/ml in PBS buffer with 2% sucrose. For longer periods of storage, store at 20°C. Avoid repeat freeze-thaw cycles.

Precautions

STEAP4 antibody - C-terminal region is for research use only and not for use in diagnostic or therapeutic procedures.

STEAP4 antibody - C-terminal region - Protein Information

Name STEAP4

Synonyms STAMP2 {ECO:0000303|PubMed:15897894}, TN

Function

Integral membrane protein that functions as a NADPH-dependent ferric-chelate reductase, using NADPH from one side of the membrane to reduce a Fe(3+) chelate that is bound on the other side of the membrane. Mediates sequential transmembrane electron transfer from NADPH to FAD and onto heme, and finally to the Fe(3+) chelate (PubMed:<a

<http://www.uniprot.org/citations/30337524> target="_blank">30337524). Can also reduce Cu(2+) to Cu(1+) (By similarity). Plays a role in systemic metabolic homeostasis, integrating inflammatory and metabolic responses (By similarity). Associated with obesity and insulin-resistance (PubMed:18381574, PubMed:18430367). Involved in inflammatory arthritis, through the regulation of inflammatory cytokines (PubMed:19660107). Inhibits anchorage- independent cell proliferation (PubMed:19787193).

Cellular Location

Cell membrane; Multi-pass membrane protein. Golgi apparatus membrane; Multi-pass membrane protein. Early endosome membrane; Multi-pass membrane protein

Tissue Location

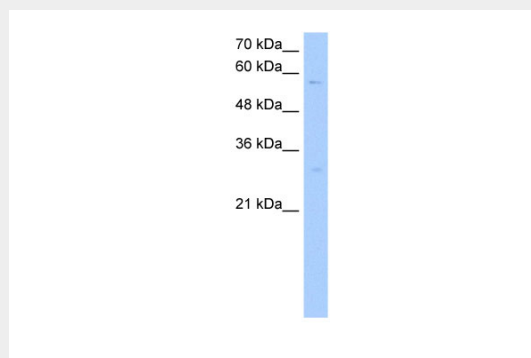
Ubiquitous. Highly expressed in adipose tissue. Expressed in placenta, lung, heart and prostate. Detected at lower levels in liver, skeletal muscle, pancreas, testis and small intestine Highly expressed in joints of patients with rheumatoid arthritis and localized with CD68 cells, a marker for macrophages

STEAP4 antibody - C-terminal region - Protocols

Provided below are standard protocols that you may find useful for product applications.

- [Western Blot](#)
- [Blocking Peptides](#)
- [Dot Blot](#)
- [Immunohistochemistry](#)
- [Immunofluorescence](#)
- [Immunoprecipitation](#)
- [Flow Cytometry](#)
- [Cell Culture](#)

STEAP4 antibody - C-terminal region - Images



WB Suggested Anti-STEAP4 Antibody Titration: 0.2-1 µg/ml
Positive Control: Jurkat cell lysate

STEAP4 antibody - C-terminal region - References

Korkmaz C.G.,et al.Oncogene 24:4934-4945(2005).
Ota T.,et al.Nat. Genet. 36:40-45(2004).

Bechtel S.,et al.BMC Genomics 8:399-399(2007).
Ohgami R.S.,et al.Nat. Genet. 37:1264-1269(2005).
Zhang C.M.,et al.Acta Pharmacol. Sin. 29:587-592(2008).