

PVRIG antibody - middle region
Rabbit Polyclonal Antibody
Catalog # AI13083**Specification**

PVRIG antibody - middle region - Product Information

Application	WB
Primary Accession	Q6DKI7
Other Accession	NM_024070 , NP_076975
Reactivity	Human
Predicted	Human
Host	Rabbit
Clonality	Polyclonal
Calculated MW	34kDa KDa

PVRIG antibody - middle region - Additional Information**Gene ID** 79037**Alias Symbol** **C7orf15, MGC104322, MGC138295, MGC138297, MGC2463****Other Names**

Transmembrane protein PVRIG, Poliovirus receptor-related immunoglobulin domain-containing protein, PVRIG, C7orf15

Format

Liquid. Purified antibody supplied in 1x PBS buffer with 0.09% (w/v) sodium azide and 2% sucrose.

Reconstitution & Storage

Add 50 ul of distilled water. Final anti-PVRIG antibody concentration is 1 mg/ml in PBS buffer with 2% sucrose. For longer periods of storage, store at 20°C. Avoid repeat freeze-thaw cycles.

Precautions

PVRIG antibody - middle region is for research use only and not for use in diagnostic or therapeutic procedures.

PVRIG antibody - middle region - Protein Information**Name** PVRIG**Synonyms** C7orf15**Function**

Cell surface receptor for NECTIN2. May act as a coinhibitory receptor that suppresses T-cell receptor-mediated signals. Following interaction with NECTIN2, inhibits T-cell proliferation. Competes with CD226 for NECTIN2-binding.

Cellular Location

Cell membrane; Multi-pass membrane protein

Tissue Location

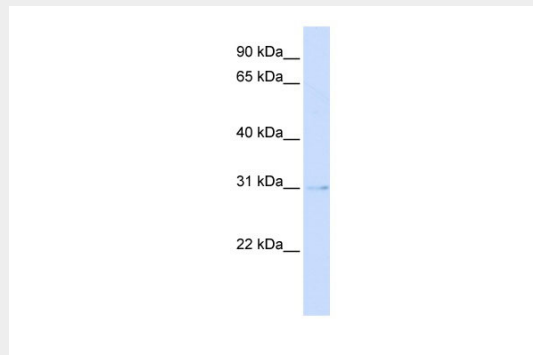
Expressed in some types of immune cells. Expressed at low levels on the surface of freshly isolated T-cells and natural killer (NK) cells, predominantly on CD8+ T-cells (mainly memory/effector, but not naive cells) and on both CD16+ and CD16- NK cells. T-cell expression levels are variable among individuals. Not detected in B-cells, naive or helper T-cells, monocytes, nor neutrophils (at protein level). Not detected in dendritic cells

PVRIG antibody - middle region - Protocols

Provided below are standard protocols that you may find useful for product applications.

- [Western Blot](#)
- [Blocking Peptides](#)
- [Dot Blot](#)
- [Immunohistochemistry](#)
- [Immunofluorescence](#)
- [Immunoprecipitation](#)
- [Flow Cytometry](#)
- [Cell Culture](#)

PVRIG antibody - middle region - Images



WB Suggested Anti-PVRIG Antibody Titration: 0.2-1 µg/ml

ELISA Titer: 1:1562500

Positive Control: Human brain

PVRIG antibody - middle region - References

Mural R.J., et al. Submitted (SEP-2005) to the EMBL/GenBank/DDBJ databases.

Wilson M.D., et al. *Physiol. Genomics* 27:201-218(2006).