

Acs14 Antibody - C-terminal region
Rabbit Polyclonal Antibody
Catalog # AI13076**Specification**

Acs14 Antibody - C-terminal region - Product Information

Application	WB
Primary Accession	O9OUJ7
Other Accession	NM_207625 , NP_997508
Reactivity	Human, Mouse, Rat, Rabbit, Pig, Horse, Bovine, Guinea Pig, Dog
Predicted	Human, Mouse, Rat, Rabbit, Pig, Horse, Bovine, Guinea Pig, Dog
Host	Rabbit
Clonality	Polyclonal
Calculated MW	79kDa KDa

Acs14 Antibody - C-terminal region - Additional Information**Gene ID** 50790**Alias Symbol** 9430020A05Rik, ACS4, AU018108, Facl4, Lacs4**Other Names**

Long-chain-fatty-acid--CoA ligase 4, 6.2.1.3, Long-chain acyl-CoA synthetase 4, LACS 4, mACS4, Acs14, Acs4, Facl4

Format

Liquid. Purified antibody supplied in 1x PBS buffer with 0.09% (w/v) sodium azide and 2% sucrose.

Reconstitution & Storage

Add 50 ul of distilled water. Final anti-Acs14 antibody concentration is 1 mg/ml in PBS buffer with 2% sucrose. For longer periods of storage, store at 20°C. Avoid repeat freeze-thaw cycles.

Precautions

Acs14 Antibody - C-terminal region is for research use only and not for use in diagnostic or therapeutic procedures.

Acs14 Antibody - C-terminal region - Protein Information**Name** Acs14**Synonyms** Acs4, Facl4**Function**

Catalyzes the conversion of long-chain fatty acids to their active form acyl-CoA for both synthesis of cellular lipids, and degradation via beta-oxidation. Preferentially activates arachidonate and eicosapentaenoate as substrates. Preferentially activates 8,9-EET > 14,15-EET > 5,6-EET >

11,12-EET. Modulates glucose-stimulated insulin secretion by regulating the levels of unesterified EETs (By similarity). Modulates prostaglandin E2 secretion (By similarity).

Cellular Location

Mitochondrion outer membrane; Single-pass type III membrane protein. Peroxisome membrane; Single-pass type III membrane protein. Microsome membrane; Single-pass type III membrane protein. Endoplasmic reticulum membrane {ECO:0000250|UniProtKB:O60488}; Single-pass type III membrane protein. Cell membrane {ECO:0000250|UniProtKB:O60488}

Tissue Location

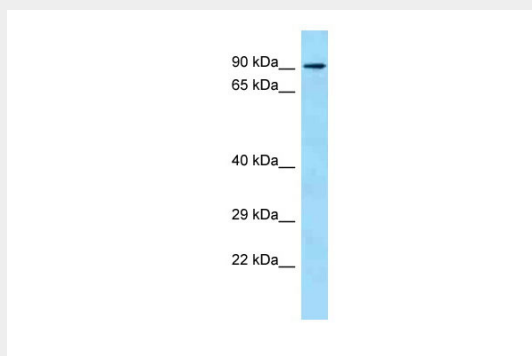
Abundant in steroidogenic tissues, also found in the kidney, brain and liver

Acs14 Antibody - C-terminal region - Protocols

Provided below are standard protocols that you may find useful for product applications.

- [Western Blot](#)
- [Blocking Peptides](#)
- [Dot Blot](#)
- [Immunohistochemistry](#)
- [Immunofluorescence](#)
- [Immunoprecipitation](#)
- [Flow Cytometry](#)
- [Cell Culture](#)

Acs14 Antibody - C-terminal region - Images



Host: Rabbit
Target Name: Acs14
Sample Tissue: Mouse Thymus lysates
Antibody Dilution: 1.0µg/ml

Acs14 Antibody - C-terminal region - References

Cho Y.-Y., et al. *Biochem. Biophys. Res. Commun.* 274:741-745(2000).
Vitelli F., et al. *Cytogenet. Cell Genet.* 88:259-263(2000).
Church D.M., et al. *PLoS Biol.* 7:E1000112-E1000112(2009).