

LASS1 antibody - middle region
Rabbit Polyclonal Antibody
Catalog # AI13060**Specification**

LASS1 antibody - middle region - Product Information

Application	WB
Primary Accession	P27544
Other Accession	NM_021267 , NP_067090
Reactivity	Human, Mouse, Rat, Horse
Predicted	Human, Mouse, Rat, Horse
Host	Rabbit
Clonality	Polyclonal
Calculated MW	39kDa kDa

LASS1 antibody - middle region - Additional Information**Gene ID** 10715**Alias Symbol** CerS1, LAG1, MGC90349, UOG1, LASS1**Other Names**

Ceramide synthase 1, CerS1, LAG1 longevity assurance homolog 1, Longevity assurance gene 1 protein homolog 1, Protein UOG-1, CERS1, LAG1, LASS1, UOG1

Format

Liquid. Purified antibody supplied in 1x PBS buffer with 0.09% (w/v) sodium azide and 2% sucrose.

Reconstitution & Storage

Add 50 ul of distilled water. Final anti-LASS1 antibody concentration is 1 mg/ml in PBS buffer with 2% sucrose. For longer periods of storage, store at 20°C. Avoid repeat freeze-thaw cycles.

Precautions

LASS1 antibody - middle region is for research use only and not for use in diagnostic or therapeutic procedures.

LASS1 antibody - middle region - Protein Information**Name** CERS1 {ECO:0000303|PubMed:17977534, ECO:0000312|HGNC:HGNC:14253}**Function**

Ceramide synthase that catalyzes the transfer of the acyl chain from acyl-CoA to a sphingoid base, with high selectivity toward stearyl-CoA (octadecanoyl-CoA; C18:0-CoA) (PubMed:17977534, PubMed:23530041, PubMed:26887952, PubMed:31916624). N-acylates sphinganine and sphingosine bases to form dihydroceramides and ceramides in de novo synthesis and salvage pathways, respectively (PubMed:<a

[17977534](http://www.uniprot.org/citations/17977534), PubMed:[23530041](http://www.uniprot.org/citations/23530041), PubMed:[24782409](http://www.uniprot.org/citations/24782409), PubMed:[26887952](http://www.uniprot.org/citations/26887952), PubMed:[31916624](http://www.uniprot.org/citations/31916624)). Plays a predominant role in skeletal muscle in regulating C18 ceramide and dihydroceramide levels with an impact on whole-body glucose metabolism and insulin sensitivity. Protects from diet-induced obesity by suppressing the uptake of glucose in multiple organs in a FGF21-dependent way (By similarity). Generates C18 ceramides in the brain, playing a critical role in cerebellar development and Purkinje cell function (By similarity). In response to cellular stress mediates mitophagy, a known defense mechanism against cell transformation and aging. Upon mitochondria fission, generates C18 ceramides that anchor lipidated MAP1LC3B/LC3B-II autophagolysosomes to outer mitochondrial membranes to eliminate damaged mitochondria (PubMed:[22922758](http://www.uniprot.org/citations/22922758)).

Cellular Location

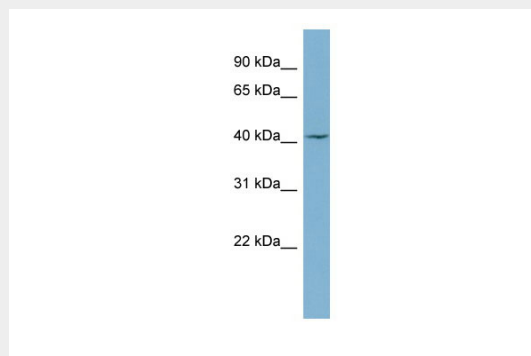
Endoplasmic reticulum membrane; Multi-pass membrane protein

LASS1 antibody - middle region - Protocols

Provided below are standard protocols that you may find useful for product applications.

- [Western Blot](#)
- [Blocking Peptides](#)
- [Dot Blot](#)
- [Immunohistochemistry](#)
- [Immunofluorescence](#)
- [Immunoprecipitation](#)
- [Flow Cytometry](#)
- [Cell Culture](#)

LASS1 antibody - middle region - Images



WB Suggested Anti-LASS1 Antibody Titration: 0.2-1 µg/ml
ELISA Titer: 1:12500
Positive Control: OVCAR-3 cell lysate

LASS1 antibody - middle region - References

Lee S.-J., et al. Proc. Natl. Acad. Sci. U.S.A. 88:4250-4254(1991).
Jiang J.C., et al. Genome Res. 8:1259-1272(1998).
Grimwood J., et al. Nature 428:529-535(2004).

Bienvenut W.V.,et al.Mol. Cell. Proteomics 11:M111.015131-M111.015131(2012).