

**GMPPA antibody - N-terminal region**  
**Rabbit Polyclonal Antibody**  
**Catalog # AI12996****Specification**

---

**GMPPA antibody - N-terminal region - Product Information**

Application	WB
Primary Accession	<a href="#">O96IJ6</a>
Other Accession	<a href="#">NM_205847</a> , <a href="#">NP_995319</a>
Reactivity	Human, Mouse, Rat, Rabbit, Horse, Yeast, Bovine, Guinea Pig, Dog
Predicted	Human, Mouse, Rat, Rabbit, Bovine, Guinea Pig, Dog
Host	Rabbit
Clonality	Polyclonal
Calculated MW	46kDa KDa

**GMPPA antibody - N-terminal region - Additional Information****Gene ID** 29926**Other Names**

Mannose-1-phosphate guanyltransferase alpha, GDP-mannose pyrophosphorylase A, GMPP-alpha, GTP-mannose-1-phosphate guanylyltransferase alpha, GMPPA

**Format**

Liquid. Purified antibody supplied in 1x PBS buffer with 0.09% (w/v) sodium azide and 2% sucrose.

**Reconstitution & Storage**

Add 50 ul of distilled water. Final anti-GMPPA antibody concentration is 1 mg/ml in PBS buffer with 2% sucrose. For longer periods of storage, store at 20°C. Avoid repeat freeze-thaw cycles.

**Precautions**

GMPPA antibody - N-terminal region is for research use only and not for use in diagnostic or therapeutic procedures.

**GMPPA antibody - N-terminal region - Protein Information****Name** GMPPA ([HGNC:22923](#))**Function**

Regulatory subunit of the GMPPA-GMPPB mannose-1-phosphate guanylyltransferase complex; reduces the catalytic activity of GMPPB when part of the complex (PubMed:&lt;a href="http://www.uniprot.org/citations/24035193" target="\_blank"&gt;24035193&lt;/a&gt;, PubMed:&lt;a href="http://www.uniprot.org/citations/33986552" target="\_blank"&gt;33986552&lt;/a&gt;). Mediates allosteric feedback inhibition of GMPPB catalytic activity upon binding GDP-alpha-D-mannose (PubMed:&lt;a href="http://www.uniprot.org/citations/24035193" target="\_blank"&gt;24035193&lt;/a&gt;, PubMed:&lt;a href="http://www.uniprot.org/citations/33986552" target="\_blank"&gt;33986552&lt;/a&gt;).

Together with GMPPB regulates GDP-alpha-D-mannose levels (PubMed:<a href="http://www.uniprot.org/citations/33986552" target="\_blank">33986552</a>).

#### Cellular Location

Cytoplasm. Note=Myc-tagged GMPPA shows a diffuse cytoplasmic and nuclear pattern in transfected COS-7 cells

#### Tissue Location

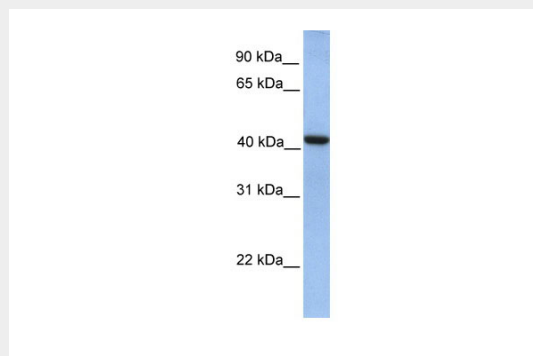
Expressed in fibroblasts (at protein level).

### GMPPA antibody - N-terminal region - Protocols

Provided below are standard protocols that you may find useful for product applications.

- [Western Blot](#)
- [Blocking Peptides](#)
- [Dot Blot](#)
- [Immunohistochemistry](#)
- [Immunofluorescence](#)
- [Immunoprecipitation](#)
- [Flow Cytometry](#)
- [Cell Culture](#)

### GMPPA antibody - N-terminal region - Images



WB Suggested Anti-GMPPA Antibody Titration: 0.2-1 µg/ml  
Positive Control: Human Lung

### GMPPA antibody - N-terminal region - References

Matthijs G.,et al.Submitted (MAR-1999) to the EMBL/GenBank/DDBJ databases.  
Ota T.,et al.Nat. Genet. 36:40-45(2004).  
Suzuki Y.,et al.Submitted (APR-2005) to the EMBL/GenBank/DDBJ databases.  
Hillier L.W.,et al.Nature 434:724-731(2005).  
Mural R.J.,et al.Submitted (JUL-2005) to the EMBL/GenBank/DDBJ databases.