

NAT8L antibody - C-terminal region
Rabbit Polyclonal Antibody
Catalog # AI12992**Specification**

NAT8L antibody - C-terminal region - Product Information

Application	WB
Primary Accession	Q8N9F0
Other Accession	NM_178557 , NP_848652
Reactivity	Human, Mouse, Rat, Rabbit, Pig, Horse, Bovine, Guinea Pig, Dog
Predicted	Human, Mouse, Rat, Rabbit, Pig, Chicken, Horse, Bovine, Guinea Pig, Dog
Host	Rabbit
Clonality	Polyclonal
Calculated MW	15kDa KDa

NAT8L antibody - C-terminal region - Additional Information**Gene ID** 339983**Alias Symbol** CML3, FLJ37478, MGC117272, NAT8-LIKE, NACED**Other Names**

N-acetylaspartate synthetase, NAA synthetase, 2.3.1.17, Camello-like protein 3, N-acetyltransferase 8-like protein, NAT8L, CML3

Format

Liquid. Purified antibody supplied in 1x PBS buffer with 0.09% (w/v) sodium azide and 2% sucrose.

Reconstitution & Storage

Add 50 ul of distilled water. Final anti-NAT8L antibody concentration is 1 mg/ml in PBS buffer with 2% sucrose. For longer periods of storage, store at 20°C. Avoid repeat freeze-thaw cycles.

Precautions

NAT8L antibody - C-terminal region is for research use only and not for use in diagnostic or therapeutic procedures.

NAT8L antibody - C-terminal region - Protein Information**Name** NAT8L ([HGNC:26742](#))**Synonyms** CML3**Function**Catalyzes the synthesis of N-acetylaspartate acid (NAA) from L-aspartate and acetyl-CoA (PubMed:[19524112](http://www.uniprot.org/citations/19524112)), PubMed:[19807691](http://www.uniprot.org/citations/19807691)),

PubMed:20385109). Promotes dopamine uptake by regulating TNF-alpha expression (By similarity). Attenuates methamphetamine-induced inhibition of dopamine uptake (PubMed:20385109).

Cellular Location

Cytoplasm. Microsome membrane {ECO:0000250|UniProtKB:D3ZVU9}; Single-pass membrane protein. Mitochondrion membrane; Single-pass membrane protein. Endoplasmic reticulum membrane {ECO:0000250|UniProtKB:Q3UGX3}; Single-pass membrane protein. Note=Its enzymatic activity contribution is quantitatively larger in mitochondrial compartment than in extramitochondrial compartment.

Tissue Location

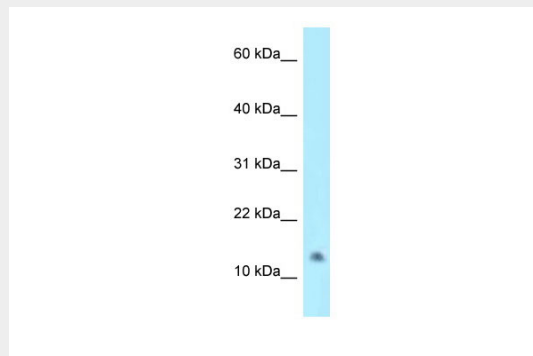
Expressed in brain..

NAT8L antibody - C-terminal region - Protocols

Provided below are standard protocols that you may find useful for product applications.

- [Western Blot](#)
- [Blocking Peptides](#)
- [Dot Blot](#)
- [Immunohistochemistry](#)
- [Immunofluorescence](#)
- [Immunoprecipitation](#)
- [Flow Cytometry](#)
- [Cell Culture](#)

NAT8L antibody - C-terminal region - Images



WB Suggested Anti-NAT8L Antibody Titration: 1.0 µg/ml
Positive Control: HepG2 Whole Cell

NAT8L antibody - C-terminal region - References

Hillier L.W., et al. Nature 434:724-731(2005).
Brandenberger R., et al. Nat. Biotechnol. 22:707-716(2004).
Ota T., et al. Nat. Genet. 36:40-45(2004).
Popsueva A.E., et al. Dev. Biol. 234:483-496(2001).
Arun P., et al. Neurochem. Int. 55:219-225(2009).