

GMPPB antibody - C-terminal region
Rabbit Polyclonal Antibody
Catalog # AI12954**Specification**

GMPPB antibody - C-terminal region - Product Information

Application	IHC, WB
Primary Accession	O9Y5P6-2
Other Accession	NM_013334 , NP_037466
Reactivity	Human, Mouse, Rat, Rabbit, Zebrafish, Pig, Horse, Bovine, Guinea Pig, Dog
Predicted	Human, Mouse, Rat, Rabbit, Zebrafish, Pig, Chicken, Horse, Bovine, Dog
Host	Rabbit
Clonality	Polyclonal
Calculated MW	43kDa KDa

GMPPB antibody - C-terminal region - Additional Information

Alias Symbol **KIAA1851**

Format

Liquid. Purified antibody supplied in 1x PBS buffer with 0.09% (w/v) sodium azide and 2% sucrose.

Reconstitution & Storage

Add 100 ul of distilled water. Final anti-GMPPB antibody concentration is 1 mg/ml in PBS buffer with 2% sucrose. For longer periods of storage, store at 20°C. Avoid repeat freeze-thaw cycles.

Precautions

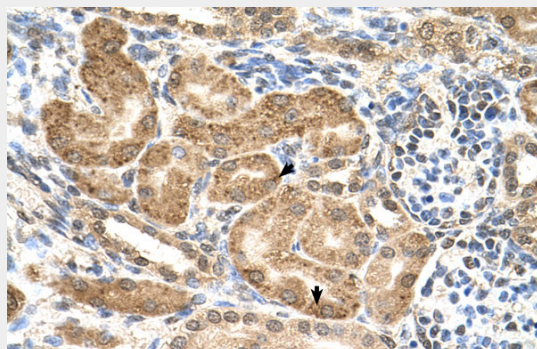
GMPPB antibody - C-terminal region is for research use only and not for use in diagnostic or therapeutic procedures.

GMPPB antibody - C-terminal region - Protein Information**GMPPB antibody - C-terminal region - Protocols**

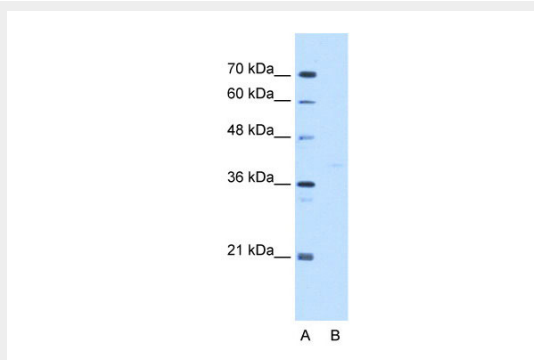
Provided below are standard protocols that you may find useful for product applications.

- [Western Blot](#)
- [Blocking Peptides](#)
- [Dot Blot](#)
- [Immunohistochemistry](#)
- [Immunofluorescence](#)
- [Immunoprecipitation](#)
- [Flow Cytometry](#)
- [Cell Culture](#)

GMPPB antibody - C-terminal region - Images



Human kidney



WB Suggested Anti-GMPPB Antibody Titration: 5.0µg/ml
Positive Control: HepG2 cell lysate

GMPPB antibody - C-terminal region - References

Clark, H.F., (2003) *Genome Res.* 13(10), 2265-2270. Reconstitution and Storage: For short term use, store at 2-8°C up to 1 week. For long term storage, store at -20°C in small aliquots to prevent freeze-thaw cycles.