

TKT antibody - N-terminal region
Rabbit Polyclonal Antibody
Catalog # AI12915**Specification**

TKT antibody - N-terminal region - Product Information

Application	IHC, WB
Primary Accession	P29401
Other Accession	NM_001064 , NP_001055
Reactivity	Human, Mouse, Rat, Rabbit, Zebrafish, Pig, Bovine
Predicted	Human, Mouse, Rat, Rabbit, Zebrafish, Pig, Chicken, Bovine
Host	Rabbit
Clonality	Polyclonal
Calculated MW	68kDa KDa

TKT antibody - N-terminal region - Additional Information**Gene ID** 7086**Alias Symbol** FLJ34765, TKT1, TK
Other Names
Transketolase, TK, 2.2.1.1, TKT**Format**

Liquid. Purified antibody supplied in 1x PBS buffer with 0.09% (w/v) sodium azide and 2% sucrose.

Reconstitution & Storage

Add 50 ul of distilled water. Final anti-TKT antibody concentration is 1 mg/ml in PBS buffer with 2% sucrose. For longer periods of storage, store at 20°C. Avoid repeat freeze-thaw cycles.

Precautions

TKT antibody - N-terminal region is for research use only and not for use in diagnostic or therapeutic procedures.

TKT antibody - N-terminal region - Protein Information**Name** TKT**Function**

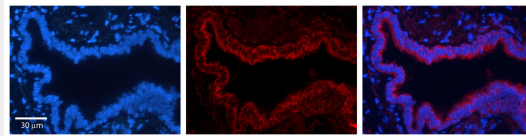
Catalyzes the transfer of a two-carbon ketol group from a ketose donor to an aldose acceptor, via a covalent intermediate with the cofactor thiamine pyrophosphate.

TKT antibody - N-terminal region - Protocols

Provided below are standard protocols that you may find useful for product applications.

- [Western Blot](#)
- [Blocking Peptides](#)
- [Dot Blot](#)
- [Immunohistochemistry](#)
- [Immunofluorescence](#)
- [Immunoprecipitation](#)
- [Flow Cytometry](#)
- [Cell Culture](#)

TKT antibody - N-terminal region - Images



TKT antibody - N-terminal region

Formalin Fixed Paraffin Embedded Tissue: Human Bronchial Epithelial Tissue Observed Staining: Cytoplasm of bronchial epithelial tissue

Primary Antibody

Concentration: 1:100

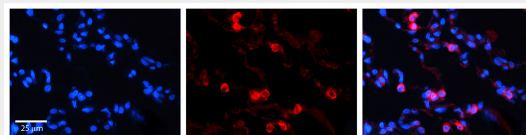
Secondary Antibody: Donkey anti-Rabbit-Cy3

Secondary Antibody

Concentration: 1:200

Magnification: 20X

Exposure Time: 0.5 - 2.0 sec



TKT antibody - N-terminal region

Formalin Fixed Paraffin Embedded Tissue: Human Lung Tissue Observed Staining: Cytoplasm of pneumocytes

Primary Antibody

Concentration: 1:100

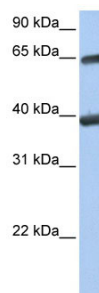
Secondary Antibody: Donkey anti-Rabbit-Cy3

Secondary Antibody

Concentration: 1:200

Magnification: 20X

Exposure Time: 0.5 - 2.0 sec



WB Suggested Anti-TKT Antibody Titration: 0.2-1 µg/ml

Positive Control: 721_B cell lysate

TKT is strongly supported by BioGPS gene expression data to be expressed in Human 721_B cells

TKT antibody - N-terminal region - References

Ewing, R.M., Mol. Syst. Biol. 3, 89 (2007) Reconstitution and Storage: For short term use, store at 2-8°C up to 1 week. For long term storage, store at -20°C in small aliquots to prevent freeze-thaw cycles.