

**HS3ST6 antibody - C-terminal region**  
**Rabbit Polyclonal Antibody**  
**Catalog # AI12910****Specification**

---

**HS3ST6 antibody - C-terminal region - Product Information**

Application	WB
Primary Accession	<a href="#">O96QI5</a>
Other Accession	<a href="#">NM_001009606</a> , <a href="#">NP_001009606</a>
Reactivity	Human, Mouse, Rat, Rabbit, Zebrafish, Horse, Bovine, Guinea Pig, Dog
Predicted	Human, Mouse, Rat, Horse, Bovine, Guinea Pig, Dog
Host	Rabbit
Clonality	Polyclonal
Calculated MW	35kDa kDa

**HS3ST6 antibody - C-terminal region - Additional Information****Gene ID** 64711**Alias Symbol** HS3ST5**Other Names**

Heparan sulfate glucosamine 3-O-sulfotransferase 6, 2.8.2.23, Heparan sulfate D-glucosaminyl 3-O-sulfotransferase 6, 3-OST-6, Heparan sulfate 3-O-sulfotransferase 6, h3-OST-6, HS3ST6, HS3ST5

**Format**

Liquid. Purified antibody supplied in 1x PBS buffer with 0.09% (w/v) sodium azide and 2% sucrose.

**Reconstitution & Storage**

Add 50 ul of distilled water. Final anti-HS3ST6 antibody concentration is 1 mg/ml in PBS buffer with 2% sucrose. For longer periods of storage, store at 20°C. Avoid repeat freeze-thaw cycles.

**Precautions**

HS3ST6 antibody - C-terminal region is for research use only and not for use in diagnostic or therapeutic procedures.

**HS3ST6 antibody - C-terminal region - Protein Information****Name** HS3ST6**Synonyms** HS3ST5**Function**

Sulfotransferase that utilizes 3'-phospho-5'-adenylyl sulfate (PAPS) to catalyze the transfer of a sulfo group to heparan sulfate. The substrate-specific O-sulfation generates an enzyme-modified heparan sulfate which acts as a binding receptor to Herpes Simplex Virus-1 (HSV-1) and permits its

entry. Unlike 3-OST-1, does not convert non- anticoagulant heparan sulfate to anticoagulant heparan sulfate.

#### Cellular Location

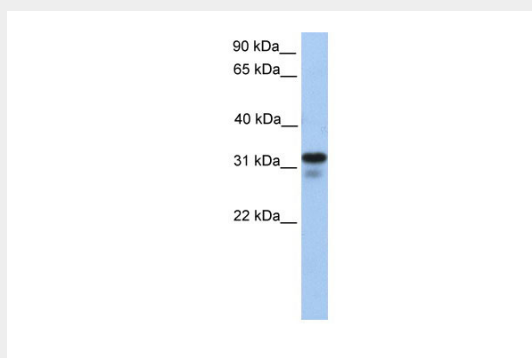
Golgi apparatus membrane; Single- pass type II membrane protein

#### HS3ST6 antibody - C-terminal region - Protocols

Provided below are standard protocols that you may find useful for product applications.

- [Western Blot](#)
- [Blocking Peptides](#)
- [Dot Blot](#)
- [Immunohistochemistry](#)
- [Immunofluorescence](#)
- [Immunoprecipitation](#)
- [Flow Cytometry](#)
- [Cell Culture](#)

#### HS3ST6 antibody - C-terminal region - Images



WB Suggested Anti-HS3ST6 Antibody Titration: 0.2-1  $\mu$ g/ml

Positive Control: 721\_B cell lysate

#### HS3ST6 antibody - C-terminal region - References

Xu, D., Biochem. J. 385(PT2), 451-459 (2005) Reconstitution and Storage: For short term use, store at 2-8°C up to 1 week. For long term storage, store at -20°C in small aliquots to prevent freeze-thaw cycles.