

Tat antibody - C-terminal region
Rabbit Polyclonal Antibody
Catalog # AI12909**Specification**

Tat antibody - C-terminal region - Product Information

Application	WB
Primary Accession	P04694
Other Accession	NM_012668 , NP_036800
Reactivity	Human, Mouse, Rat, Zebrafish, Pig, Horse, Bovine, Guinea Pig, Dog
Predicted	Human, Mouse, Rat, Rabbit, Zebrafish, Pig, Chicken, Horse, Bovine
Host	Rabbit
Clonality	Polyclonal
Calculated MW	49kDa KDa

Tat antibody - C-terminal region - Additional Information**Gene ID** 24813**Other Names**

Tyrosine aminotransferase, TAT, 2.6.1.5, L-tyrosine:2-oxoglutarate aminotransferase, Tat

Format

Liquid. Purified antibody supplied in 1x PBS buffer with 0.09% (w/v) sodium azide and 2% sucrose.

Reconstitution & Storage

Add 50 ul of distilled water. Final anti-Tat antibody concentration is 1 mg/ml in PBS buffer with 2% sucrose. For longer periods of storage, store at 20°C. Avoid repeat freeze-thaw cycles.

Precautions

Tat antibody - C-terminal region is for research use only and not for use in diagnostic or therapeutic procedures.

Tat antibody - C-terminal region - Protein Information**Name** Tat**Function**

Transaminase involved in tyrosine breakdown. Converts tyrosine to p-hydroxyphenylpyruvate. Can catalyze the reverse reaction, using glutamic acid, with 2-oxoglutarate as cosubstrate (in vitro). Has much lower affinity and transaminase activity towards phenylalanine.

Tissue Location

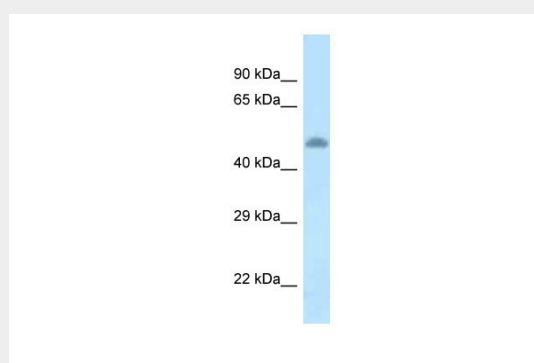
Liver.

Tat antibody - C-terminal region - Protocols

Provided below are standard protocols that you may find useful for product applications.

- [Western Blot](#)
- [Blocking Peptides](#)
- [Dot Blot](#)
- [Immunohistochemistry](#)
- [Immunofluorescence](#)
- [Immunoprecipitation](#)
- [Flow Cytometry](#)
- [Cell Culture](#)

Tat antibody - C-terminal region - Images



WB Suggested Anti-Tat Antibody Titration: 1.0 μ g/ml
Positive Control: Rat Brain