

GADD45B antibody - middle region
Rabbit Polyclonal Antibody
Catalog # AI12900**Specification**

GADD45B antibody - middle region - Product Information

Application	IHC
Primary Accession	O75293
Other Accession	NM_015675 , NP_056490
Reactivity	Human, Mouse, Rat, Pig, Horse, Bovine, Guinea Pig, Dog
Predicted Host	Rat, Dog
Clonality	Rabbit
Calculated MW	Polyclonal 18kDa KDa

GADD45B antibody - middle region - Additional Information**Gene ID** 4616**Alias Symbol** **DKFZP566B133, GADD45BETA, MYD118****Other Names**

Growth arrest and DNA damage-inducible protein GADD45 beta, Myeloid differentiation primary response protein MyD118, Negative growth regulatory protein MyD118, GADD45B, MYD118

Format

Liquid. Purified antibody supplied in 1x PBS buffer with 0.09% (w/v) sodium azide and 2% sucrose.

Reconstitution & Storage

Add 50 ul of distilled water. Final anti-GADD45B antibody concentration is 1 mg/ml in PBS buffer with 2% sucrose. For longer periods of storage, store at 20°C. Avoid repeat freeze-thaw cycles.

Precautions

GADD45B antibody - middle region is for research use only and not for use in diagnostic or therapeutic procedures.

GADD45B antibody - middle region - Protein Information**Name** GADD45B**Synonyms** MYD118**Function**

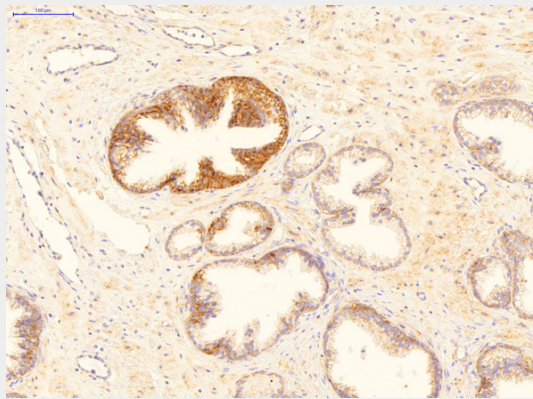
Involved in the regulation of growth and apoptosis. Mediates activation of stress-responsive MTK1/MEKK4 MAPKKK.

GADD45B antibody - middle region - Protocols

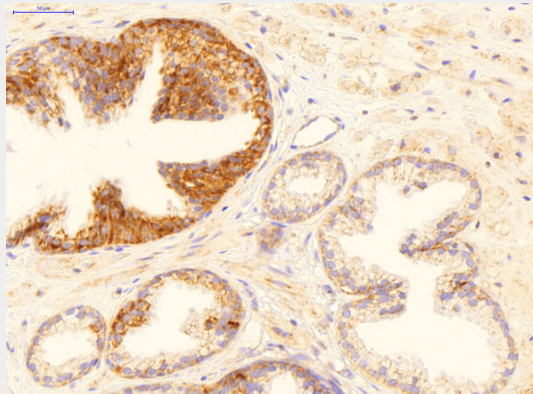
Provided below are standard protocols that you may find useful for product applications.

- [Western Blot](#)
- [Blocking Peptides](#)
- [Dot Blot](#)
- [Immunohistochemistry](#)
- [Immunofluorescence](#)
- [Immunoprecipitation](#)
- [Flow Cytometry](#)
- [Cell Culture](#)

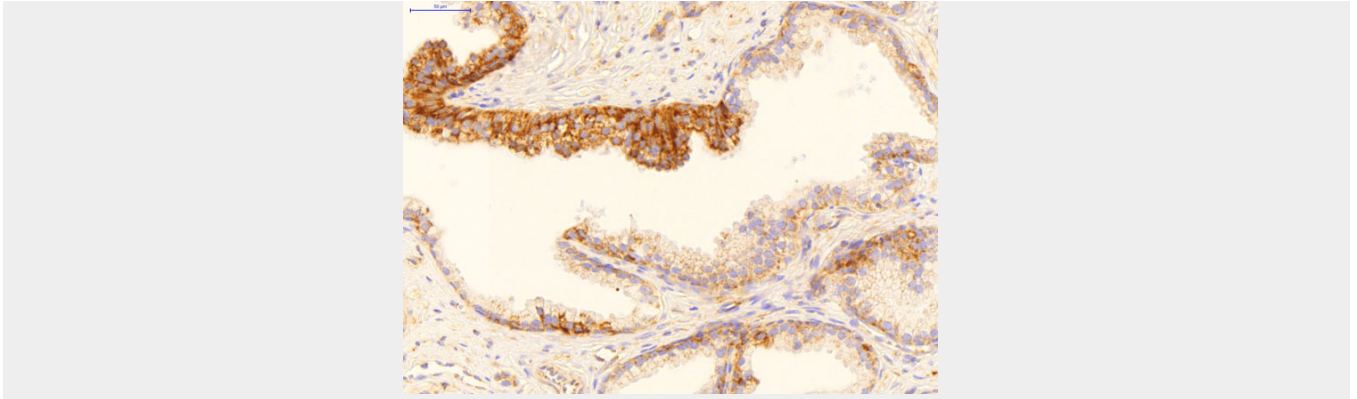
GADD45B antibody - middle region - Images



Product Page for GADD45B antibody - middle region Sample Type : Human Prostate Cancer
Primary Antibody Dilution : 2 μ g/ml Color/Signal Descriptions: GADD45B (DAB; brown), nuclei (hematoxylin; blue) Gene Name: GADD45B



Product Page for GADD45B antibody - middle region Sample Type : Human Prostate Cancer
Primary Antibody Dilution : 2 μ g/ml Color/Signal Descriptions: GADD45B (DAB; brown), nuclei (hematoxylin; blue) Gene Name: GADD45B



Product Page for GADD45B antibody - middle region Sample Type : Human Prostate Cancer
Primary Antibody Dilution : 2 μ g/ml Color/Signal Descriptions: GADD45B (DAB; brown), nuclei (hematoxylin; blue) Gene Name: GADD45B

GADD45B antibody - middle region - References

Tornatore, L., (2008) J. Mol. Biol. 378(1), 97-111 Reconstitution and Storage: For short term use, store at 2-8C upto 1 week. For long term storage, store at -20C in small aliquots to prevent freeze-thaw cycles. Publications: Babu, E. et al. Role of SLC5A8, a plasma membrane transporter and a tumor suppressor, in the antitumor activity of dichloroacetate. Oncogene 30, 4026-37 (2011). IHC, Dog, Horse, Pig, Human, Mouse, Bovine, Rat, Guinea pig 21505039 Dong, R. et al. Cells with dendritic cell morphology and immunophenotype, binuclear morphology, and immunosuppressive function in dendritic cell cultures. Cell. Immunol. 272, 1-10 (2011). ChIP, Dog, Horse, Pig, Human, Mouse, Bovine, Rat, Guinea pig 22048458