

**IDH2 antibody - middle region**  
**Rabbit Polyclonal Antibody**  
**Catalog # AI12890****Specification**

---

**IDH2 antibody - middle region - Product Information**

Application	WB
Primary Accession	<a href="#">P48735</a>
Other Accession	<a href="#">NM_002168</a> , <a href="#">NP_002159</a>
Reactivity	Human, Mouse, Rat, Rabbit, Zebrafish, Pig, Horse, Yeast, Bovine, Guinea Pig, Dog
Predicted Host	Human, Mouse, Rabbit, Pig, Dog
Clonality	Rabbit
Calculated MW	Polyclonal 47kDa KDa

**IDH2 antibody - middle region - Additional Information****Gene ID 3418**

Alias Symbol ICD-M, IDH, IDHM, IDP, mNADP-IDH, IDPM, D2HGA2

**Other Names**

Isocitrate dehydrogenase [NADP], mitochondrial, IDH, 1.1.1.42, ICD-M, IDP, NADP(+)-specific ICDH, Oxalosuccinate decarboxylase, IDH2

**Format**

Liquid. Purified antibody supplied in 1x PBS buffer with 0.09% (w/v) sodium azide and 2% sucrose.

**Reconstitution & Storage**

Add 50 ul of distilled water. Final anti-IDH2 antibody concentration is 1 mg/ml in PBS buffer with 2% sucrose. For longer periods of storage, store at 20°C. Avoid repeat freeze-thaw cycles.

**Precautions**

IDH2 antibody - middle region is for research use only and not for use in diagnostic or therapeutic procedures.

**IDH2 antibody - middle region - Protein Information****Name IDH2****Function**

Plays a role in intermediary metabolism and energy production (PubMed:[19228619](http://www.uniprot.org/citations/19228619)), PubMed:[22416140](http://www.uniprot.org/citations/22416140)). It may tightly associate or interact with the pyruvate dehydrogenase complex (PubMed:[19228619](http://www.uniprot.org/citations/19228619)), PubMed:[22416140](http://www.uniprot.org/citations/22416140)).

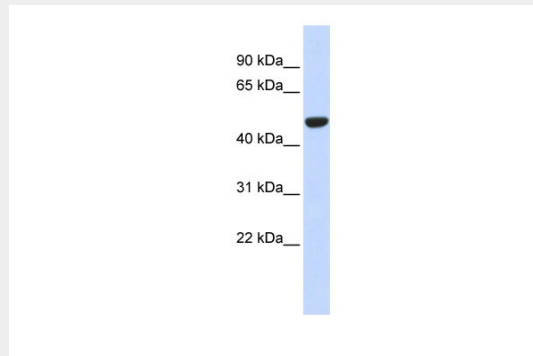
**Cellular Location**

Mitochondrion {ECO:0000250|UniProtKB:P33198}.

**IDH2 antibody - middle region - Protocols**

Provided below are standard protocols that you may find useful for product applications.

- [Western Blot](#)
- [Blocking Peptides](#)
- [Dot Blot](#)
- [Immunohistochemistry](#)
- [Immunofluorescence](#)
- [Immunoprecipitation](#)
- [Flow Cytometry](#)
- [Cell Culture](#)

**IDH2 antibody - middle region - Images**

WB Suggested Anti-IDH2 Antibody Titration: 0.2-1 µg/ml

ELISA Titer: 1:12500

Positive Control: Human Muscle



IDH2 antibody - middle region validated by WB using Proximal kidney tubules purified from cortex at 1:1000.

**IDH2 antibody - middle region - References**

Shin, S.W., (2008) Biochem. Biophys. Res. Commun. 366(4), 1012-1018 Reconstitution and Storage: For short term use, store at 2-8°C up to 1 week. For long term storage, store at -20°C in small aliquots to prevent freeze-thaw cycles. Publications: Vohwinkel, C.U. et al. Elevated CO<sub>2</sub> levels cause mitochondrial dysfunction and impair cell proliferation. J. Biol. Chem. 286, 37067-76 (2011). WB, Zebrafish, Human, Mouse, Dog, Pig, Horse, Rabbit, Rat, Guinea pig, Bovine, Yeast 21903582