

IGFBP7 antibody - C-terminal region
Rabbit Polyclonal Antibody
Catalog # AI12886

Specification

IGFBP7 antibody - C-terminal region - Product Information

Application	IHC, WB
Primary Accession	O16270
Other Accession	NM_001553 , NP_001544
Reactivity	Human, Mouse, Rat, Rabbit, Sheep, Horse, Bovine, Guinea Pig, Dog
Predicted	Human, Mouse, Rat, Rabbit, Pig, Sheep, Bovine, Guinea Pig, Dog
Host	Rabbit
Clonality	Polyclonal
Calculated MW	29kDa KDa

IGFBP7 antibody - C-terminal region - Additional Information

Gene ID 3490

Alias Symbol FSTL2, IGFBP-7, IGFBP-7v, MAC25, PSF, AGM, TAF, IBP-7, RAMSVPS, IGFBPRP1

Other Names

Insulin-like growth factor-binding protein 7, IBP-7, IGF-binding protein 7, IGFBP-7, IGFBP-rP1, MAC25 protein, PGI2-stimulating factor, Prostacyclin-stimulating factor, Tumor-derived adhesion factor, TAF, IGFBP7, MAC25, PSF

Format

Liquid. Purified antibody supplied in 1x PBS buffer with 0.09% (w/v) sodium azide and 2% sucrose.

Reconstitution & Storage

Add 50 ul of distilled water. Final anti-IGFBP7 antibody concentration is 1 mg/ml in PBS buffer with 2% sucrose. For longer periods of storage, store at 20°C. Avoid repeat freeze-thaw cycles.

Precautions

IGFBP7 antibody - C-terminal region is for research use only and not for use in diagnostic or therapeutic procedures.

IGFBP7 antibody - C-terminal region - Protein Information

Name IGFBP7

Synonyms MAC25, PSF

Function

Binds IGF-I and IGF-II with a relatively low affinity. Stimulates prostacyclin (PGI2) production. Stimulates cell adhesion.

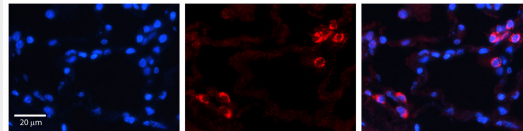
Cellular Location Secreted.

IGFBP7 antibody - C-terminal region - Protocols

Provided below are standard protocols that you may find useful for product applications.

- [Western Blot](#)
- [Blocking Peptides](#)
- [Dot Blot](#)
- [Immunohistochemistry](#)
- [Immunofluorescence](#)
- [Immunoprecipitation](#)
- [Flow Cytometry](#)
- [Cell Culture](#)

IGFBP7 antibody - C-terminal region - Images



IGFBP7 antibody - C-terminal region

Formalin Fixed Paraffin Embedded Tissue: Human Lung Tissue Observed Staining: Cytoplasm and membrane of pneumocytes

Primary Antibody

Concentration: 1:100

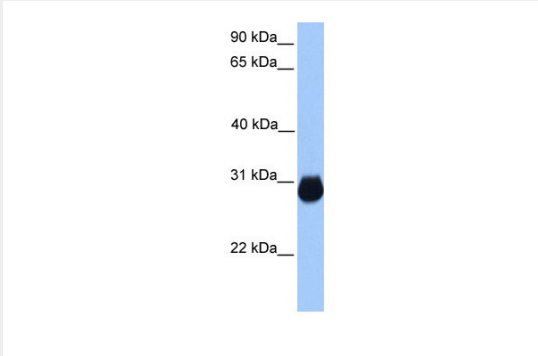
Secondary Antibody: Donkey anti-Rabbit-Cy3

Secondary Antibody

Concentration: 1:200

Magnification: 20X

Exposure Time: 0.5 - 2.0 sec



90 kDa__
65 kDa__
40 kDa__
31 kDa__
22 kDa__

WB Suggested Anti-IGFBP7 Antibody Titration: 0.2-1 µg/ml

Positive Control: Human Muscle

IGFBP7 antibody - C-terminal region - References

Wajapeyee, N., (2008) Cell 132(3), 363-374 Reconstitution and Storage: For short term use, store at 2-8°C up to 1 week. For long term storage, store at -20°C in small aliquots to prevent freeze-thaw cycles.