

**SLC30A8 antibody - middle region**  
**Rabbit Polyclonal Antibody**  
**Catalog # AI12876****Specification**

---

**SLC30A8 antibody - middle region - Product Information**

|                   |   |
|-------------------|---|
| Application       | WB  |
| Primary Accession | <a href="#">Q8IWU4</a>  |
| Other Accession   | <a href="#">NM_173851</a> , <a href="#">NP_776250</a>         |
| Reactivity        | Human, Mouse, Rat, Rabbit, Zebrafish, Pig, Horse, Bovine, Dog |
| Predicted Host    | Human, Rabbit, Pig, Chicken, Horse, Dog                       |
| Clonality         | Rabbit  |
| Calculated MW     | Polyclonal<br>41kDa KDa                                       |

**SLC30A8 antibody - middle region - Additional Information****Gene ID** 169026**Alias Symbol** ZnT-8, ZNT8**Other Names**

Zinc transporter 8, ZnT-8, Solute carrier family 30 member 8, SLC30A8, ZNT8

**Format**

Liquid. Purified antibody supplied in 1x PBS buffer with 0.09% (w/v) sodium azide and 2% sucrose.

**Reconstitution & Storage**

Add 50 ul of distilled water. Final anti-SLC30A8 antibody concentration is 1 mg/ml in PBS buffer with 2% sucrose. For longer periods of storage, store at 20°C. Avoid repeat freeze-thaw cycles.

**Precautions**

SLC30A8 antibody - middle region is for research use only and not for use in diagnostic or therapeutic procedures.

**SLC30A8 antibody - middle region - Protein Information****Name** SLC30A8 ([HGNC:20303](#))**Function**

Proton-coupled zinc ion antiporter mediating the entry of zinc into the lumen of pancreatic beta cell secretory granules, thereby regulating insulin secretion.

**Cellular Location**

Cytoplasmic vesicle, secretory vesicle membrane; Multi-pass membrane protein. Cell membrane; Multi-pass membrane protein. Note=Associated with insulin and glucagon secretory granules.

**Tissue Location**

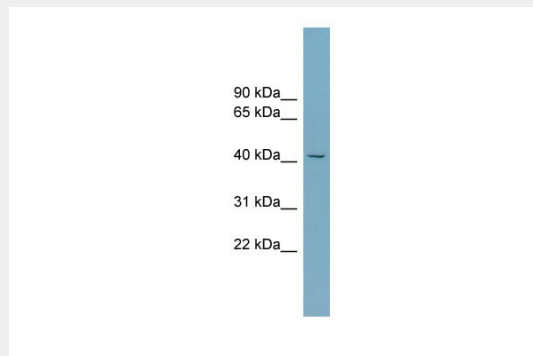
In the endocrine pancreas, expressed in insulin-producing beta cells. Expressed at relatively high levels in subcutaneous fat tissue from lean persons; much lower levels in visceral fat, whether from lean or obese individuals, and in subcutaneous fat tissue from obese individuals. Expressed in peripheral blood mononuclear cells, including T-cells and B-cells, with great variation among individuals ranging from negative to strongly positive

### **SLC30A8 antibody - middle region - Protocols**

Provided below are standard protocols that you may find useful for product applications.

- [Western Blot](#)
- [Blocking Peptides](#)
- [Dot Blot](#)
- [Immunohistochemistry](#)
- [Immunofluorescence](#)
- [Immunoprecipitation](#)
- [Flow Cytometry](#)
- [Cell Culture](#)

### **SLC30A8 antibody - middle region - Images**



WB Suggested Anti-SLC30A8 Antibody Titration: 0.2-1  $\mu$ g/ml  
Positive Control: NCI-H226 cell lysate