

**E2F8 antibody - middle region**  
**Rabbit Polyclonal Antibody**  
**Catalog # AI12829****Specification**

---

**E2F8 antibody - middle region - Product Information**

Application	<b>WB</b>
Primary Accession	<a href="#">AOAVK6</a>
Other Accession	<a href="#">NM_024680</a> , <a href="#">NP_078956</a>
Reactivity	<b>Human, Mouse, Rat, Rabbit, Pig, Horse, Bovine, Guinea Pig, Dog</b>
Predicted	<b>Human, Mouse, Rat, Rabbit, Pig, Horse, Bovine, Guinea Pig, Dog</b>
Host	<b>Rabbit</b>
Clonality	<b>Polyclonal</b>
Calculated MW	<b>94kDa KDa</b>

**E2F8 antibody - middle region - Additional Information****Gene ID** 79733**Alias Symbol** **FLJ23311, E2F-8**  
**Other Names**  
Transcription factor E2F8, E2F-8, E2F8**Format**

Liquid. Purified antibody supplied in 1x PBS buffer with 0.09% (w/v) sodium azide and 2% sucrose.

**Reconstitution & Storage**

Add 50 ul of distilled water. Final anti-E2F8 antibody concentration is 1 mg/ml in PBS buffer with 2% sucrose. For longer periods of storage, store at 20°C. Avoid repeat freeze-thaw cycles.

**Precautions**

E2F8 antibody - middle region is for research use only and not for use in diagnostic or therapeutic procedures.

**E2F8 antibody - middle region - Protein Information****Name** E2F8**Function**

Atypical E2F transcription factor that participates in various processes such as angiogenesis and polyploidization of specialized cells. Mainly acts as a transcription repressor that binds DNA independently of DP proteins and specifically recognizes the E2 recognition site 5'-TTTC[CG]CGC-3'. Directly represses transcription of classical E2F transcription factors such as E2F1: component of a feedback loop in S phase by repressing the expression of E2F1, thereby preventing p53/TP53-dependent apoptosis. Plays a key role in polyploidization of cells in placenta and liver by regulating the endocycle, probably by repressing genes promoting cytokinesis and

antagonizing action of classical E2F proteins (E2F1, E2F2 and/or E2F3). Required for placental development by promoting polyploidization of trophoblast giant cells. Acts as a promoter of sprouting angiogenesis, possibly by acting as a transcription activator: associates with HIF1A, recognizes and binds the VEGFA promoter, which is different from canonical E2 recognition site, and activates expression of the VEGFA gene.

#### Cellular Location

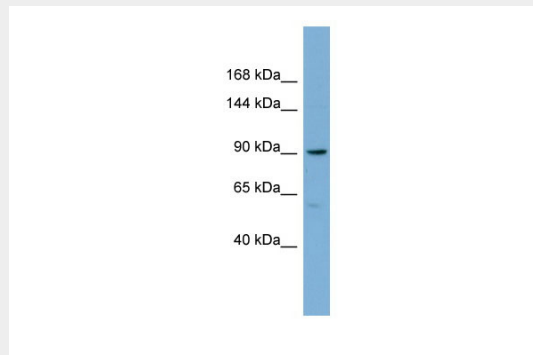
Nucleus.

#### E2F8 antibody - middle region - Protocols

Provided below are standard protocols that you may find useful for product applications.

- [Western Blot](#)
- [Blocking Peptides](#)
- [Dot Blot](#)
- [Immunohistochemistry](#)
- [Immunofluorescence](#)
- [Immunoprecipitation](#)
- [Flow Cytometry](#)
- [Cell Culture](#)

#### E2F8 antibody - middle region - Images



WB Suggested Anti-E2F8 Antibody Titration: 0.2-1 µg/ml

ELISA Titer: 1:1562500

Positive Control: COLO205 cell lysate

#### E2F8 antibody - middle region - References

Zalmas, L.P., (2008) *EMBO Rep.* 9(3), 252-259. Reconstitution and Storage: For short term use, store at 2-8°C up to 1 week. For long term storage, store at -20°C in small aliquots to prevent freeze-thaw cycles.