

NSDHL antibody - middle region
Rabbit Polyclonal Antibody
Catalog # AI12754**Specification**

NSDHL antibody - middle region - Product Information

Application	WB
Primary Accession	Q15738
Other Accession	NM_015922 , NP_057006
Reactivity	Human, Mouse, Rat, Rabbit, Zebrafish, Pig, Horse, Bovine, Guinea Pig, Dog
Predicted	Human, Mouse, Rat, Rabbit, Zebrafish, Pig, Chicken, Horse, Guinea Pig, Dog
Host	Rabbit
Clonality	Polyclonal
Calculated MW	42kDa kDa

NSDHL antibody - middle region - Additional Information**Gene ID** 50814**Alias Symbol** **H105E3, XAP104, SDR31E1****Other Names**

Sterol-4-alpha-carboxylate 3-dehydrogenase, decarboxylating, 1.1.1.170, Protein H105e3, NSDHL, H105E3

Format

Liquid. Purified antibody supplied in 1x PBS buffer with 0.09% (w/v) sodium azide and 2% sucrose.

Reconstitution & Storage

Add 100 ul of distilled water. Final anti-NSDHL antibody concentration is 1 mg/ml in PBS buffer with 2% sucrose. For longer periods of storage, store at 20°C. Avoid repeat freeze-thaw cycles.

Precautions

NSDHL antibody - middle region is for research use only and not for use in diagnostic or therapeutic procedures.

NSDHL antibody - middle region - Protein Information**Name** NSDHL**Synonyms** H105E3**Function**

Catalyzes the NAD(P)(+)-dependent oxidative decarboxylation of the C4 methyl groups of 4-alpha-carboxysterols in post-squalene cholesterol biosynthesis (By similarity). Also plays a role in the regulation of the endocytic trafficking of EGFR (By similarity).

Cellular Location

Endoplasmic reticulum membrane; Single-pass membrane protein. Lipid droplet {ECO:0000250|UniProtKB:Q9R1J0} Note=Trafficking through the Golgi is necessary for ER membrane localization. {ECO:0000250|UniProtKB:Q9R1J0}

Tissue Location

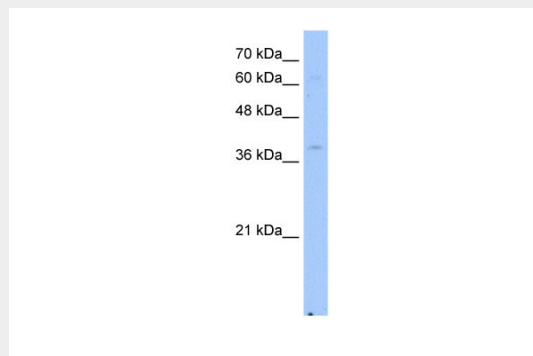
Brain, heart, liver, lung, kidney, skin and placenta

NSDHL antibody - middle region - Protocols

Provided below are standard protocols that you may find useful for product applications.

- [Western Blot](#)
- [Blocking Peptides](#)
- [Dot Blot](#)
- [Immunohistochemistry](#)
- [Immunofluorescence](#)
- [Immunoprecipitation](#)
- [Flow Cytometry](#)
- [Cell Culture](#)

NSDHL antibody - middle region - Images



WB Suggested Anti-NSDHL Antibody Titration: 2.5µg/ml

Positive Control: HepG2 cell lysate

NSDHL is strongly supported by BioGPS gene expression data to be expressed in Human HepG2 cells

NSDHL antibody - middle region - References

Guggenberger, C., J. Steroid Biochem. Mol. Biol. 104(3-5), 105-109 (2007) Reconstitution and Storage: For short term use, store at 2-8°C up to 1 week. For long term storage, store at -20°C in small aliquots to prevent freeze-thaw cycles.