

PGRMC1 antibody - N-terminal region
Rabbit Polyclonal Antibody
Catalog # AI12710

Specification

PGRMC1 antibody - N-terminal region - Product Information

Application	IHC, WB
Primary Accession	O00264
Other Accession	NM_006667 , NP_006658
Reactivity	Human, Mouse, Rat, Rabbit, Pig, Horse, Bovine, Dog
Predicted	Human, Mouse, Rat, Rabbit, Horse, Bovine, Dog
Host	Rabbit
Clonality	Polyclonal
Calculated MW	22kDa KDa

PGRMC1 antibody - N-terminal region - Additional Information

Gene ID 10857

Alias Symbol **HPR6.6, MPR**
Other Names
Membrane-associated progesterone receptor component 1, mPR, PGRMC1, HPR6.6, PGRMC

Format

Liquid. Purified antibody supplied in 1x PBS buffer with 0.09% (w/v) sodium azide and 2% sucrose.

Reconstitution & Storage

Add 50 ul of distilled water. Final anti-PGRMC1 antibody concentration is 1 mg/ml in PBS buffer with 2% sucrose. For longer periods of storage, store at 20°C. Avoid repeat freeze-thaw cycles.

Precautions

PGRMC1 antibody - N-terminal region is for research use only and not for use in diagnostic or therapeutic procedures.

PGRMC1 antibody - N-terminal region - Protein Information

Name PGRMC1 ([HGNC:16090](#))

Function

Component of a progesterone-binding protein complex (PubMed:[28396637](http://www.uniprot.org/citations/28396637)). Binds progesterone (PubMed:[25675345](http://www.uniprot.org/citations/25675345)). Has many reported cellular functions (heme homeostasis, interaction with CYPs). Required for the maintenance of uterine histoarchitecture and normal female reproductive lifespan (By similarity). Intracellular heme chaperone. Regulates heme synthesis via interactions with FECH and acts as a heme donor for at least some hemoproteins

(PubMed:27599036). Forms a ternary complex with TMEM97 receptor and low density lipid receptor/LDLR, which increases LDLR-mediated LDL lipoprotein internalization (PubMed:30443021).

Cellular Location

Microsome membrane {ECO:0000250|UniProtKB:Q95250}; Single-pass membrane protein. Smooth endoplasmic reticulum membrane; Single-pass membrane protein. Mitochondrion outer membrane {ECO:0000250|UniProtKB:O55022}; Single-pass membrane protein; Extracellular side {ECO:0000250|UniProtKB:O55022} Secreted Note=Localized at cell membrane, probably in lipid rafts, in serum- starved conditions.

Tissue Location

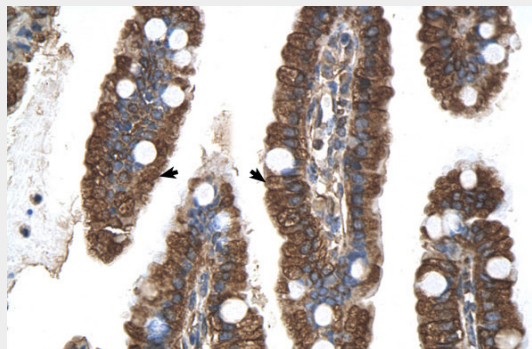
Detected in urine (at protein level) (PubMed:36213313, PubMed:37453717). Expressed by endometrial glands and stroma (at protein level) (PubMed:23793472). Widely expressed, with highest expression in liver and kidney.

PGRMC1 antibody - N-terminal region - Protocols

Provided below are standard protocols that you may find useful for product applications.

- [Western Blot](#)
- [Blocking Peptides](#)
- [Dot Blot](#)
- [Immunohistochemistry](#)
- [Immunofluorescence](#)
- [Immunoprecipitation](#)
- [Flow Cytometry](#)
- [Cell Culture](#)

PGRMC1 antibody - N-terminal region - Images



Human Intestine



WB Suggested Anti-PGRMC1 Antibody Titration: 0.2-1 µg/ml
Positive Control: HepG2 cell lysate

PGRMC1 antibody - N-terminal region - References

Peluso, J.J., (2008) J. Clin. Endocrinol. Metab. 93(5), 1592-1599 Reconstitution and Storage: For short term use, store at 2-8°C up to 1 week. For long term storage, store at -20°C in small aliquots to prevent freeze-thaw cycles.