

ATP2A3 antibody - middle region
Rabbit Polyclonal Antibody
Catalog # AI12695**Specification**

ATP2A3 antibody - middle region - Product Information

Application	WB
Primary Accession	O93084
Other Accession	NM_005173 , NP_005164
Reactivity	Human, Rat, Rabbit, Pig, Horse, Bovine, Guinea Pig, Dog
Predicted	Human, Rabbit, Pig, Horse, Bovine, Guinea Pig, Dog
Host	Rabbit
Clonality	Polyclonal
Calculated MW	109kDa KDa

ATP2A3 antibody - middle region - Additional Information**Gene ID** 489**Alias Symbol** SERCA3**Other Names**

Sarcoplasmic/endoplasmic reticulum calcium ATPase 3, SERCA3, SR Ca(2+)-ATPase 3, 3.6.3.8, Calcium pump 3, ATP2A3

Format

Liquid. Purified antibody supplied in 1x PBS buffer with 0.09% (w/v) sodium azide and 2% sucrose.

Reconstitution & Storage

Add 50 ul of distilled water. Final anti-ATP2A3 antibody concentration is 1 mg/ml in PBS buffer with 2% sucrose. For longer periods of storage, store at 20°C. Avoid repeat freeze-thaw cycles.

Precautions

ATP2A3 antibody - middle region is for research use only and not for use in diagnostic or therapeutic procedures.

ATP2A3 antibody - middle region - Protein Information**Name** ATP2A3 ([HGNC:813](#))**Function**

This magnesium-dependent enzyme catalyzes the hydrolysis of ATP coupled with the transport of calcium. Transports calcium ions from the cytosol into the sarcoplasmic/endoplasmic reticulum lumen. Contributes to calcium sequestration involved in muscular excitation/contraction.

Cellular Location

Nucleus membrane; Multi-pass membrane protein. Endoplasmic reticulum membrane; Multi-pass

membrane protein. Sarcoplasmic reticulum membrane; Multi-pass membrane protein

Tissue Location

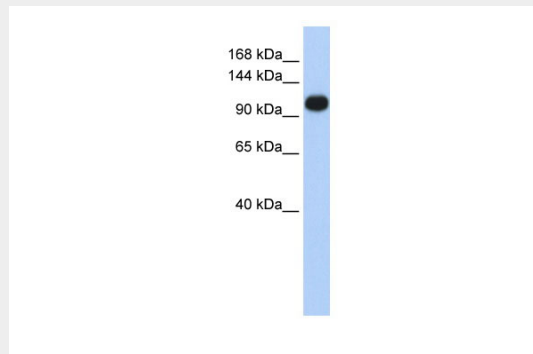
Found in most tissues. Most abundant in thymus, trachea, salivary gland, spleen, bone marrow, lymph node, peripheral leukocytes, pancreas and colon. Also detected in fetal tissues Expressed in cell lineages of hematopoietic, epithelial, or embryonic origin and also expressed in several cancer cell lines

ATP2A3 antibody - middle region - Protocols

Provided below are standard protocols that you may find useful for product applications.

- [Western Blot](#)
- [Blocking Peptides](#)
- [Dot Blot](#)
- [Immunohistochemistry](#)
- [Immunofluorescence](#)
- [Immunoprecipitation](#)
- [Flow Cytometry](#)
- [Cell Culture](#)

ATP2A3 antibody - middle region - Images

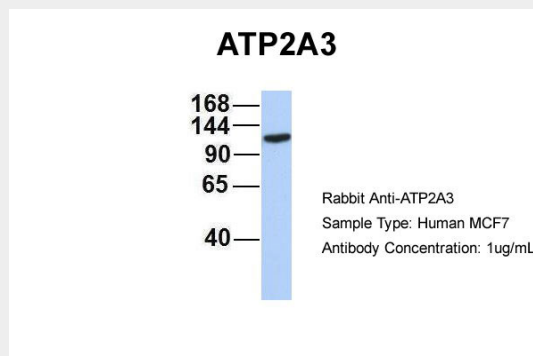


WB Suggested Anti-ATP2A3 Antibody Titration: 0.2-1 µg/ml

ELISA Titer: 1:312500

Positive Control: Jurkat cell lysate

ATP2A3 is strongly supported by BioGPS gene expression data to be expressed in Human Jurkat cells



Host:Rabbit

Target Name:ATP2A3

Sample Tissue: MCF7

Antibody Dilution: 1.0µg/ml ATP2A3 is strongly supported by BioGPS gene expression data to be expressed in MCF7

ATP2A3 antibody - middle region - References

Korosec, B., (2008) Cancer Genet. Cytogenet. 181(2), 112-118 Reconstitution and Storage: For short term use, store at 2-8°C up to 1 week. For long term storage, store at -20°C in small aliquots to prevent freeze-thaw cycles.