

**IL11RA antibody - N-terminal region**  
**Rabbit Polyclonal Antibody**  
**Catalog # AI12687****Specification**

---

**IL11RA antibody - N-terminal region - Product Information**

Application	WB
Primary Accession	<a href="#">Q14626</a>
Other Accession	<a href="#">NM_004512</a> , <a href="#">NP_004503</a>
Reactivity	Human, Mouse, Rat, Rabbit, Pig, Horse, Bovine, Guinea Pig, Dog
Predicted	Human, Mouse, Rabbit, Chicken, Horse, Bovine, Guinea Pig
Host	Rabbit
Clonality	Polyclonal
Calculated MW	43kDa kDa

**IL11RA antibody - N-terminal region - Additional Information****Gene ID** 3590**Alias Symbol** MGC2146, CRSDA**Other Names**

Interleukin-11 receptor subunit alpha, IL-11 receptor subunit alpha, IL-11R subunit alpha, IL-11R-alpha, IL-11RA, IL11RA

**Format**

Liquid. Purified antibody supplied in 1x PBS buffer with 0.09% (w/v) sodium azide and 2% sucrose.

**Reconstitution & Storage**

Add 50 ul of distilled water. Final anti-IL11RA antibody concentration is 1 mg/ml in PBS buffer with 2% sucrose. For longer periods of storage, store at 20°C. Avoid repeat freeze-thaw cycles.

**Precautions**

IL11RA antibody - N-terminal region is for research use only and not for use in diagnostic or therapeutic procedures.

**IL11RA antibody - N-terminal region - Protein Information****Name** IL11RA ([HGNC:5967](#))**Function**

Receptor for interleukin-11 (IL11). The receptor systems for IL6, LIF, OSM, CNTF, IL11 and CT1 can utilize IL6ST for initiating signal transmission. The IL11/IL11RA/IL6ST complex may be involved in the control of proliferation and/or differentiation of skeletogenic progenitor or other mesenchymal cells (Probable). Essential for the normal development of craniofacial bones and teeth. Restricts suture fusion and tooth number.

### Cellular Location

[Interleukin-11 receptor subunit alpha]: Membrane; Single-pass type I membrane protein [Isoform HCR2]: Secreted

### Tissue Location

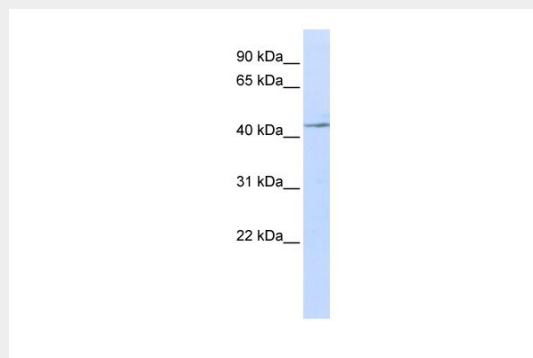
Expressed in a number of cell lines, including the myelogenous leukemia cell line K-562, the megakaryocytic leukemia cell line M-07e, the erythroleukemia cell line TF-1, and the osteosarcoma cell lines, MG-63 and SaOS-2 (PubMed:7670098). Also expressed in normal and malignant prostate epithelial cell lines. Expression levels are increased in prostate carcinoma.

### IL11RA antibody - N-terminal region - Protocols

Provided below are standard protocols that you may find useful for product applications.

- [Western Blot](#)
- [Blocking Peptides](#)
- [Dot Blot](#)
- [Immunohistochemistry](#)
- [Immunofluorescence](#)
- [Immunoprecipitation](#)
- [Flow Cytometry](#)
- [Cell Culture](#)

### IL11RA antibody - N-terminal region - Images



WB Suggested Anti-IL11RA Antibody Titration: 0.2-1 µg/ml

ELISA Titer: 1:312500

Positive Control: Jurkat cell lysate

### IL11RA antibody - N-terminal region - References

Nakayama, T., (2007) Int. J. Oncol. 30(4), 825-833 Reconstitution and Storage: For short term use, store at 2-8°C up to 1 week. For long term storage, store at -20°C in small aliquots to prevent freeze-thaw cycles.