

OSMR antibody - middle region
Rabbit Polyclonal Antibody
Catalog # AI12677**Specification**

OSMR antibody - middle region - Product Information

Application	WB
Primary Accession	O99650
Other Accession	NM_003999 , NP_003990
Reactivity	Human, Rabbit, Horse, Guinea Pig, Dog
Predicted	Human, Rabbit, Horse, Guinea Pig, Dog
Host	Rabbit
Clonality	Polyclonal
Calculated MW	110kDa KDa

OSMR antibody - middle region - Additional Information**Gene ID** 9180**Alias Symbol** MGC150626, MGC150627, MGC75127, OSMRB, PLCA1**Other Names**

Oncostatin-M-specific receptor subunit beta, Interleukin-31 receptor subunit beta, IL-31 receptor subunit beta, IL-31R subunit beta, IL-31R-beta, IL-31RB, OSMR, OSMRB

Format

Liquid. Purified antibody supplied in 1x PBS buffer with 0.09% (w/v) sodium azide and 2% sucrose.

Reconstitution & Storage

Add 50 ul of distilled water. Final anti-OSMR antibody concentration is 1 mg/ml in PBS buffer with 2% sucrose. For longer periods of storage, store at 20°C. Avoid repeat freeze-thaw cycles.

Precautions

OSMR antibody - middle region is for research use only and not for use in diagnostic or therapeutic procedures.

OSMR antibody - middle region - Protein Information**Name** OSMR**Synonyms** OSMRB**Function**

Associates with IL31RA to form the IL31 receptor. Binds IL31 to activate STAT3 and possibly STAT1 and STAT5. Capable of transducing OSM-specific signaling events.

Cellular Location

Membrane; Single-pass type I membrane protein

Tissue Location

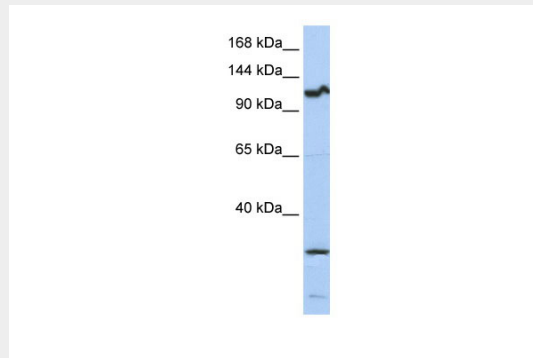
Expressed in keratinocytes (at protein level) (PubMed:21261663). Expressed at relatively high levels in all neural cells as well as fibroblast and epithelial cells (PubMed:8999038)

OSMR antibody - middle region - Protocols

Provided below are standard protocols that you may find useful for product applications.

- [Western Blot](#)
- [Blocking Peptides](#)
- [Dot Blot](#)
- [Immunohistochemistry](#)
- [Immunofluorescence](#)
- [Immunoprecipitation](#)
- [Flow Cytometry](#)
- [Cell Culture](#)

OSMR antibody - middle region - Images



WB Suggested Anti-OSMR Antibody Titration: 0.2-1 μ g/ml

ELISA Titer: 1:312500

Positive Control: 721_B cell lysate

OSMR antibody - middle region - References

Arita, K., (2008) Am. J. Hum. Genet. 82(1), 73-80 Reconstitution and Storage: For short term use, store at 2-8C upto 1 week. For long term storage, store at -20C in small aliquots to prevent freeze-thaw cycles.