

PAGE1 antibody - middle region
Rabbit Polyclonal Antibody
Catalog # AI12654**Specification**

PAGE1 antibody - middle region - Product Information

Application	WB
Primary Accession	O75459
Other Accession	NM_003785 , NP_003776
Reactivity	Human
Predicted	Human
Host	Rabbit
Clonality	Polyclonal
Calculated MW	16kDa KDa

PAGE1 antibody - middle region - Additional Information**Gene ID** 8712**Alias Symbol** **GAGE-9, GAGEB1, PAGE-1, AL5, CT16.3****Other Names**

P antigen family member 1, PAGE-1, AL5, G antigen 9, GAGE-9, G antigen family B member 1, Prostate-associated gene 1 protein, PAGE1, GAGE9, GAGEB1

Format

Liquid. Purified antibody supplied in 1x PBS buffer with 0.09% (w/v) sodium azide and 2% sucrose.

Reconstitution & Storage

Add 100 ul of distilled water. Final anti-PAGE1 antibody concentration is 1 mg/ml in PBS buffer with 2% sucrose. For longer periods of storage, store at 20°C. Avoid repeat freeze-thaw cycles.

Precautions

PAGE1 antibody - middle region is for research use only and not for use in diagnostic or therapeutic procedures.

PAGE1 antibody - middle region - Protein Information**Name** PAGE1**Synonyms** GAGE9, GAGEB1**Tissue Location**

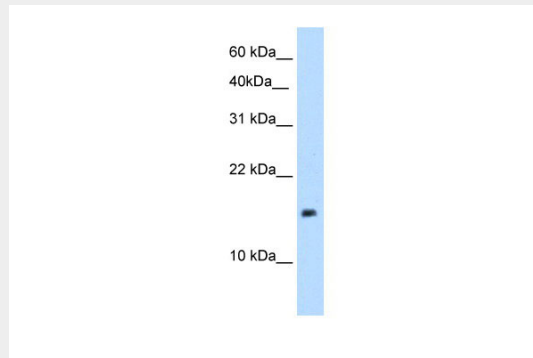
Isolated from prostate cancer cell lines; expression associated with progression to androgen insensitive phenotype. Expressed in normal testis and at lower level in normal placenta

PAGE1 antibody - middle region - Protocols

Provided below are standard protocols that you may find useful for product applications.

- [Western Blot](#)
- [Blocking Peptides](#)
- [Dot Blot](#)
- [Immunohistochemistry](#)
- [Immunofluorescence](#)
- [Immunoprecipitation](#)
- [Flow Cytometry](#)
- [Cell Culture](#)

PAGE1 antibody - middle region - Images



WB Suggested Anti-PAGE1 Antibody Titration: 5.0 μ g/ml

Positive Control: 721_B cell lysate

PAGE1 is supported by BioGPS gene expression data to be expressed in 721_B

PAGE1 antibody - middle region - References

De(1999)CancerRes.59(13),3157-3165
Reconstitution and Storage: For short term use, store at 2-8C up to 1 week. For long term storage, store at -20C in small aliquots to prevent freeze-thaw cycles.