

MTHFD2 antibody - N-terminal region
Rabbit Polyclonal Antibody
Catalog # AI12646**Specification**

MTHFD2 antibody - N-terminal region - Product Information

Application	WB
Primary Accession	P13995
Other Accession	NM_006636 , NP_006627
Reactivity	Human, Mouse, Rat, Rabbit, Zebrafish, Pig, Horse, Yeast, Bovine, Guinea Pig, Dog
Predicted	Human, Mouse, Rat, Zebrafish, Pig, Chicken, Horse, Guinea Pig, Dog
Host	Rabbit
Clonality	Polyclonal
Calculated MW	35kDa KDa

MTHFD2 antibody - N-terminal region - Additional Information**Gene ID** 10797**Alias Symbol** NMDMC**Other Names**

Bifunctional methylenetetrahydrofolate dehydrogenase/cyclohydrolase, mitochondrial, NAD-dependent methylenetetrahydrofolate dehydrogenase, 1.5.1.15, Methenyltetrahydrofolate cyclohydrolase, 3.5.4.9, MTHFD2, NMDMC

Format

Liquid. Purified antibody supplied in 1x PBS buffer with 0.09% (w/v) sodium azide and 2% sucrose.

Reconstitution & Storage

Add 100 ul of distilled water. Final anti-MTHFD2 antibody concentration is 1 mg/ml in PBS buffer with 2% sucrose. For longer periods of storage, store at 20°C. Avoid repeat freeze-thaw cycles.

Precautions

MTHFD2 antibody - N-terminal region is for research use only and not for use in diagnostic or therapeutic procedures.

MTHFD2 antibody - N-terminal region - Protein Information**Name** MTHFD2**Synonyms** NMDMC**Function**

Although its dehydrogenase activity is NAD-specific, it can also utilize NADP at a reduced efficiency.

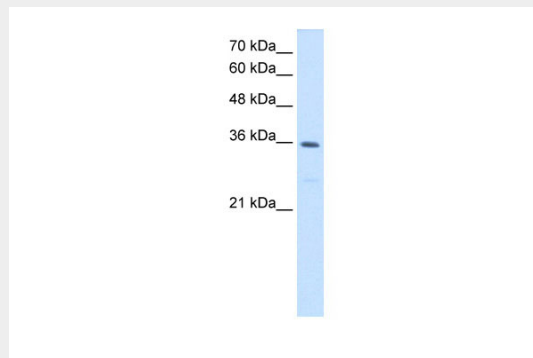
Cellular Location
Mitochondrion.

MTHFD2 antibody - N-terminal region - Protocols

Provided below are standard protocols that you may find useful for product applications.

- [Western Blot](#)
- [Blocking Peptides](#)
- [Dot Blot](#)
- [Immunohistochemistry](#)
- [Immunofluorescence](#)
- [Immunoprecipitation](#)
- [Flow Cytometry](#)
- [Cell Culture](#)

MTHFD2 antibody - N-terminal region - Images



WB Suggested Anti-MTHFD2 Antibody Titration: 1.25 μ g/ml
Positive Control: HepG2 cell lysate