

C21orf58 antibody - N-terminal region
Rabbit Polyclonal Antibody
Catalog # AI12631

Specification

C21orf58 antibody - N-terminal region - Product Information

Application	WB
Primary Accession	P58505
Other Accession	NM_058180 , NP_478060
Reactivity	Human
Predicted	Human
Host	Rabbit
Clonality	Polyclonal
Calculated MW	35kDa KDa

C21orf58 antibody - N-terminal region - Additional Information

Gene ID 54058

Other Names

Uncharacterized protein C21orf58, C21orf58

Format

Liquid. Purified antibody supplied in 1x PBS buffer with 0.09% (w/v) sodium azide and 2% sucrose.

Reconstitution & Storage

Add 50 ul of distilled water. Final anti-C21orf58 antibody concentration is 1 mg/ml in PBS buffer with 2% sucrose. For longer periods of storage, store at 20°C. Avoid repeat freeze-thaw cycles.

Precautions

C21orf58 antibody - N-terminal region is for research use only and not for use in diagnostic or therapeutic procedures.

C21orf58 antibody - N-terminal region - Protein Information

Name C21orf58

Tissue Location

Expressed in skin and fetal lung.

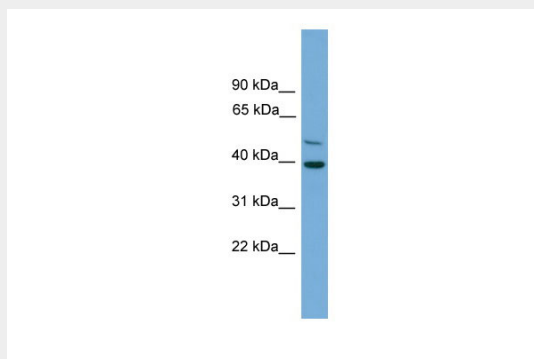
C21orf58 antibody - N-terminal region - Protocols

Provided below are standard protocols that you may find useful for product applications.

- [Western Blot](#)
- [Blocking Peptides](#)

- [Dot Blot](#)
- [Immunohistochemistry](#)
- [Immunofluorescence](#)
- [Immunoprecipitation](#)
- [Flow Cytometry](#)
- [Cell Culture](#)

C21orf58 antibody - N-terminal region - Images



WB Suggested Anti-C21orf58 Antibody Titration: 0.2-1 $\mu\text{g/ml}$
Positive Control: Jurkat cell lysate