

TRAPPC10 Antibody - C-terminal region
Rabbit Polyclonal Antibody
Catalog # AI12619

Specification

TRAPPC10 Antibody - C-terminal region - Product Information

Application	WB
Primary Accession	Q86SI7
Reactivity	Human, Mouse, Rat, Zebrafish, Horse, Bovine, Guinea Pig, Dog
Predicted	Human, Mouse, Rat, Zebrafish, Pig, Horse, Bovine, Guinea Pig, Dog
Host	Rabbit
Clonality	Polyclonal
Calculated MW	30kDa KDa

TRAPPC10 Antibody - C-terminal region - Additional Information

Alias Symbol **TRAPPC10,**
Format
Liquid. Purified antibody supplied in 1x PBS buffer with 0.09% (w/v) sodium azide and 2% sucrose.

Reconstitution & Storage

Add 50 μ l of distilled water. Final Anti-TRAPPC10 antibody concentration is 1 mg/ml in PBS buffer with 2% sucrose. For longer periods of storage, store at -20°C. Avoid repeat freeze-thaw cycles.

Precautions

TRAPPC10 Antibody - C-terminal region is for research use only and not for use in diagnostic or therapeutic procedures.

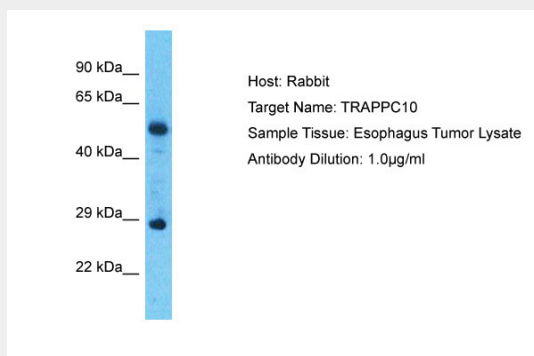
TRAPPC10 Antibody - C-terminal region - Protein Information

TRAPPC10 Antibody - C-terminal region - Protocols

Provided below are standard protocols that you may find useful for product applications.

- [Western Blot](#)
- [Blocking Peptides](#)
- [Dot Blot](#)
- [Immunohistochemistry](#)
- [Immunofluorescence](#)
- [Immunoprecipitation](#)
- [Flow Cytometry](#)
- [Cell Culture](#)

TRAPPC10 Antibody - C-terminal region - Images



Host: Rabbit
Target Name: TRAPPC10
Sample Tissue: Esophagus Tumor lysates
Antibody Dilution: 1.0µg/ml