

SGPP2 antibody - C-terminal region
Rabbit Polyclonal Antibody
Catalog # AI12614

Specification

SGPP2 antibody - C-terminal region - Product Information

Application	IHC, WB
Primary Accession	Q8IWX5
Other Accession	XP_001128702
Reactivity	Human, Mouse, Rat, Rabbit, Pig, Horse, Bovine, Guinea Pig
Predicted	Human, Mouse, Rat, Rabbit, Pig, Horse, Bovine, Guinea Pig
Host	Rabbit
Clonality	Polyclonal
Calculated MW	37kDa KDa

SGPP2 antibody - C-terminal region - Additional Information

Gene ID 130367

Alias Symbol FLJ39004, SPP2

Other Names

Sphingosine-1-phosphate phosphatase 2, SPPase2, Spp2, hSPP2, 3.1.3.-, Sphingosine-1-phosphatase 2, SGPP2

Format

Liquid. Purified antibody supplied in 1x PBS buffer with 0.09% (w/v) sodium azide and 2% sucrose.

Reconstitution & Storage

Add 100 ul of distilled water. Final anti-SGPP2 antibody concentration is 1 mg/ml in PBS buffer with 2% sucrose. For longer periods of storage, store at 20°C. Avoid repeat freeze-thaw cycles.

Precautions

SGPP2 antibody - C-terminal region is for research use only and not for use in diagnostic or therapeutic procedures.

SGPP2 antibody - C-terminal region - Protein Information

Name SGPP2 ([HGNC:19953](#))

Function

Has specific phosphohydrolase activity towards sphingoid base 1-phosphates. Has high phosphohydrolase activity against dihydrosphingosine-1-phosphate and sphingosine-1-phosphate (S1P) in vitro (PubMed: <http://www.uniprot.org/citations/12411432> target="_blank">12411432). Sphingosine-1-phosphate phosphatase activity is needed for efficient recycling of sphingosine into the sphingolipid synthesis pathway (By similarity). May play a role in attenuating intracellular sphingosine 1-phosphate (S1P) signaling. May play a role in

pro-inflammatory signaling (PubMed: 17113265). Plays a role in the regulation of pancreatic islet beta-cell endoplasmic reticulum stress and proliferation (By similarity).

Cellular Location

Endoplasmic reticulum membrane; Multi-pass membrane protein

Tissue Location

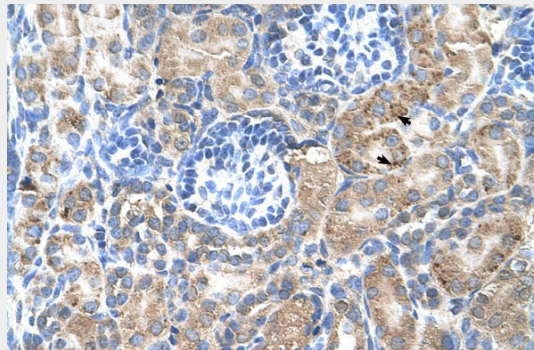
Expressed strongly in kidney and heart, followed by brain, colon, small intestine and lung. Not detected in skeletal muscle, thymus, spleen, liver, placenta, and peripheral blood leukocytes.

SGPP2 antibody - C-terminal region - Protocols

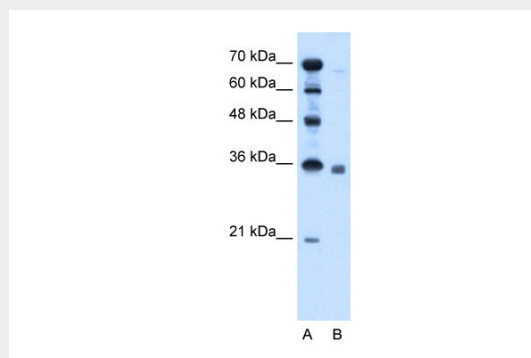
Provided below are standard protocols that you may find useful for product applications.

- [Western Blot](#)
- [Blocking Peptides](#)
- [Dot Blot](#)
- [Immunohistochemistry](#)
- [Immunofluorescence](#)
- [Immunoprecipitation](#)
- [Flow Cytometry](#)
- [Cell Culture](#)

SGPP2 antibody - C-terminal region - Images



Human kidney



WB Suggested Anti-SGPP2 Antibody Titration: 2.5µg/ml
Positive Control: HepG2 cell lysate