

GYS2 antibody - middle region
Rabbit Polyclonal Antibody
Catalog # AI12613**Specification**

GYS2 antibody - middle region - Product Information

| | |
|-------------------|--|
| Application | WB |
| Primary Accession | P54840 |
| Other Accession | NM_021957 , NP_068776 |
| Reactivity | Human, Mouse, Rat, Rabbit, Zebrafish, Pig, Horse, Bovine, Guinea Pig, Dog |
| Predicted | Human, Mouse, Rat, Zebrafish, Pig, Chicken, Horse, Bovine, Guinea Pig, Dog |
| Host | Rabbit |
| Clonality | Polyclonal |
| Calculated MW | 81kDa kDa |

GYS2 antibody - middle region - Additional Information**Gene ID** 2998**Other Names**

Glycogen [starch] synthase, liver, 2.4.1.11, GYS2

Format

Liquid. Purified antibody supplied in 1x PBS buffer with 0.09% (w/v) sodium azide and 2% sucrose.

Reconstitution & Storage

Add 50 ul of distilled water. Final anti-GYS2 antibody concentration is 1 mg/ml in PBS buffer with 2% sucrose. For longer periods of storage, store at 20°C. Avoid repeat freeze-thaw cycles.

Precautions

GYS2 antibody - middle region is for research use only and not for use in diagnostic or therapeutic procedures.

GYS2 antibody - middle region - Protein Information**Name** GYS2 {ECO:0000303|PubMed:9691087, ECO:0000312|HGNC:HGNC:4707}**Function**

Glycogen synthase participates in the glycogen biosynthetic process along with glycogenin and glycogen branching enzyme. Extends the primer composed of a few glucose units formed by glycogenin by adding new glucose units to it. In this context, glycogen synthase transfers the glycosyl residue from UDP-Glc to the non-reducing end of alpha-1,4-glucan.

Tissue Location

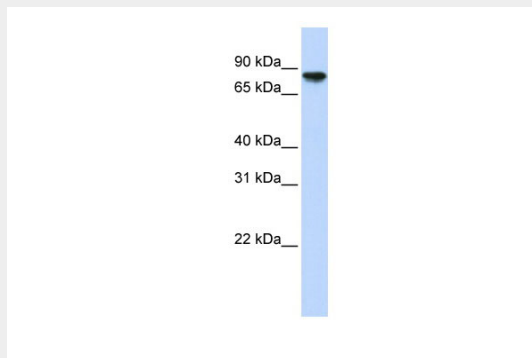
Specifically expressed in liver (at protein level).

GYS2 antibody - middle region - Protocols

Provided below are standard protocols that you may find useful for product applications.

- [Western Blot](#)
- [Blocking Peptides](#)
- [Dot Blot](#)
- [Immunohistochemistry](#)
- [Immunofluorescence](#)
- [Immunoprecipitation](#)
- [Flow Cytometry](#)
- [Cell Culture](#)

GYS2 antibody - middle region - Images



WB Suggested Anti-GYS2 Antibody Titration: 0.2-1 μ g/ml
ELISA Titer: 1:312500
Positive Control: Human Muscle

GYS2 antibody - middle region - References

Watanabe, I., (2003) Clin. Pharmacol. Ther. 73(5), 435-455 Reconstitution and Storage: For short term use, store at 2-8°C up to 1 week. For long term storage, store at -20°C in small aliquots to prevent freeze-thaw cycles.