

**GLUD1 antibody - N-terminal region**  
**Rabbit Polyclonal Antibody**  
**Catalog # AI12610**

**Specification**

---

**GLUD1 antibody - N-terminal region - Product Information**

Application	IHC, WB
Primary Accession	<a href="#">Q5TDP6</a>
Other Accession	<a href="#">NM_005271</a> , <a href="#">NP_005262</a>
Reactivity	Human, Mouse, Rat, Rabbit, Zebrafish, Pig, Sheep, Horse, Bovine, Guinea Pig, Dog
Predicted Host	Human, Zebrafish, Pig, Chicken
Clonality	Rabbit
Calculated MW	Polyclonal 56kDa KDa

**GLUD1 antibody - N-terminal region - Additional Information**

**Gene ID** 51557

**Alias Symbol** GDH, GDH1, GLUD, MGC132003

**Other Names**

Lengsin, Glutamate-ammonia ligase domain-containing protein 1, Lens glutamine synthase-like, LGSN, GLULD1, LGS

**Format**

Liquid. Purified antibody supplied in 1x PBS buffer with 0.09% (w/v) sodium azide and 2% sucrose.

**Reconstitution & Storage**

Add 50 ul of distilled water. Final anti-GLUD1 antibody concentration is 1 mg/ml in PBS buffer with 2% sucrose. For longer periods of storage, store at 20°C. Avoid repeat freeze-thaw cycles.

**Precautions**

GLUD1 antibody - N-terminal region is for research use only and not for use in diagnostic or therapeutic procedures.

**GLUD1 antibody - N-terminal region - Protein Information**

**Name** LGSN

**Synonyms** GLULD1, LGS

**Function**

May act as a component of the cytoskeleton or as a chaperone for the reorganization of intermediate filament proteins during terminal differentiation in the lens. Does not seem to have enzymatic activity (By similarity).

**Tissue Location**

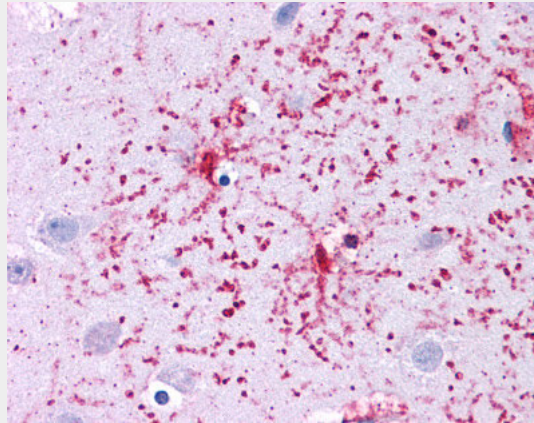
Abundantly expressed in lens.

### **GLUD1 antibody - N-terminal region - Protocols**

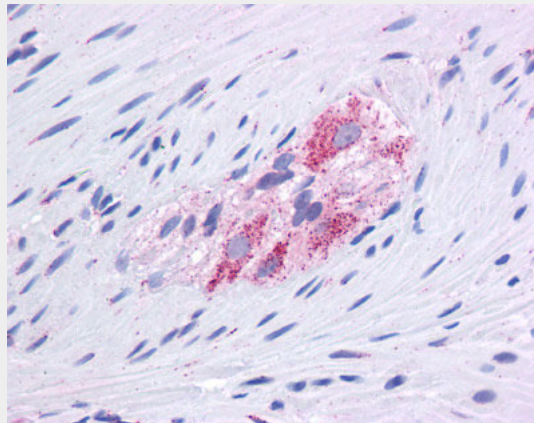
Provided below are standard protocols that you may find useful for product applications.

- [Western Blot](#)
- [Blocking Peptides](#)
- [Dot Blot](#)
- [Immunohistochemistry](#)
- [Immunofluorescence](#)
- [Immunoprecipitation](#)
- [Flow Cytometry](#)
- [Cell Culture](#)

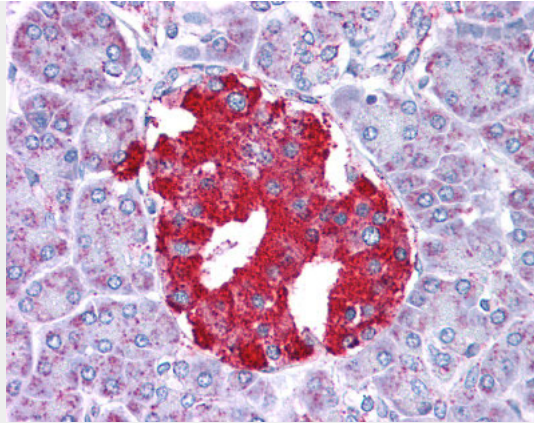
### **GLUD1 antibody - N-terminal region - Images**



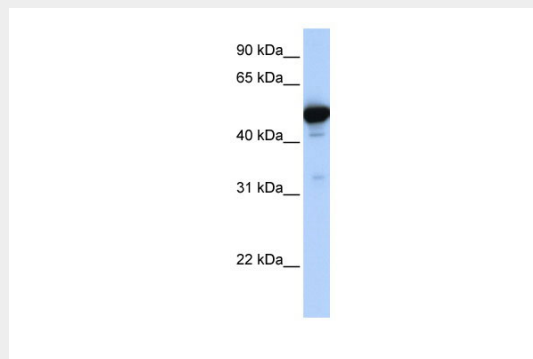
Immunohistochemistry with pFa fixed human brain tissue tissue



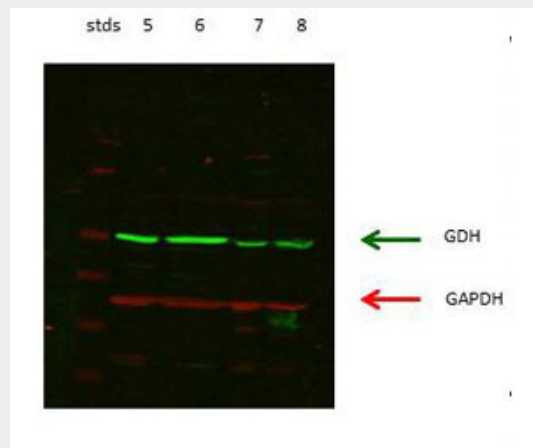
Immunohistochemistry with CORTEX/KIDNEY tissue



Immunohistochemistry with pFA fixed human pancreas tissue

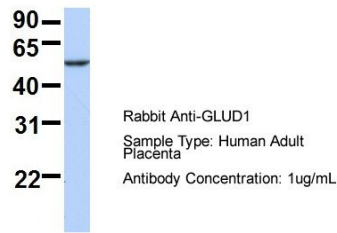


GLUD1 antibody - N-terminal region validated by WB using Fetal Liver Lysate at 1µg/ml.



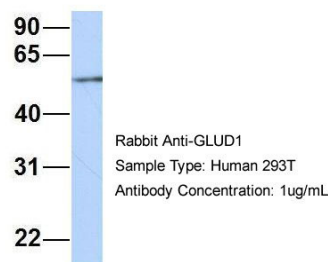
lanes 5: rat kidney cortex lanes 6: rat kidney proximal tubules prepped from cortex lanes 7: LLCPK-F+ pig kidney proximal tubule tissue culture lysate lanes 8: rat brain supernatant

### GLUD1



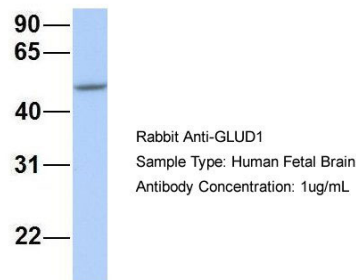
Host: Rabbit Target Name: SERPINA3 Sample Tissue: Human Adult Placenta Antibody Dilution: 1.0 µg/ml

### GLUD1



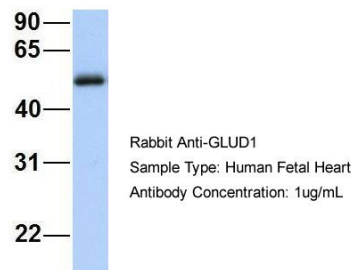
Host: Rabbit  
Target Name: HIRIP3  
Sample Tissue: 293T  
Antibody Dilution: 1.0 µg/ml  
GLUD1 is supported by BioGPS gene expression data to be expressed in HEK293T

### GLUD1

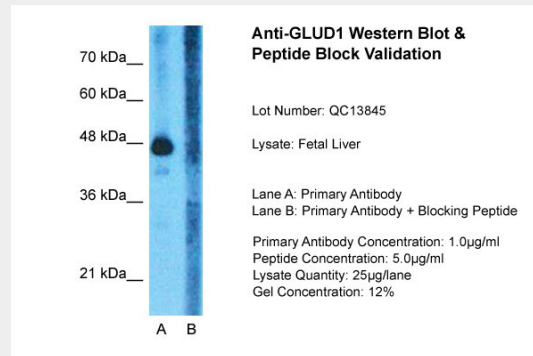


Host: Rabbit Target Name: NOP56 Sample Tissue: Human Fetal Brain Antibody Dilution: 1.0 µg/ml

### GLUD1



Host: Rabbit Target Name: GNAS Sample Tissue: Human Fetal Heart Antibody Dilution: 1.0ug/ml



Host: Rabbit Target Name:GLUD1 Sample Tissue:Human Fetal Liver Lane A: Primary Antibody  
Lane B: Primary Antibody + Blocking Peptide Primary Antibody Concentration:1ug/ml Peptide  
Concentration: 5ug/ml Lysate Quantity: 25ug/lane/lane Gel Concentration: 0.12

### **GLUD1 antibody - N-terminal region - References**

Kawajiri, M., (2006) *Pediatr. Res.* 59(3), 359-364 Reconstitution and Storage: For short term use, store at 2-8 C up to 1 week. For long term storage, store at -20 C in small aliquots to prevent freeze-thaw cycles.