

ALDH4A1 antibody - C-terminal region
Rabbit Polyclonal Antibody
Catalog # AI12609

Specification

ALDH4A1 antibody - C-terminal region - Product Information

Application	IHC, WB
Primary Accession	P30038
Other Accession	NM_003748 , NP_003739
Reactivity	Human, Mouse, Rat, Rabbit, Zebrafish, Pig, Horse, Bovine, Dog
Predicted	Human, Mouse, Rat, Rabbit, Zebrafish, Chicken, Horse
Host	Rabbit
Clonality	Polyclonal
Calculated MW	62kDa KDa

ALDH4A1 antibody - C-terminal region - Additional Information

Gene ID 8659

Alias Symbol ALDH4, P5CD, P5CDh, P5CDhL, P5CDhS

Other Names

Delta-1-pyrroline-5-carboxylate dehydrogenase, mitochondrial, P5C dehydrogenase, 1.2.1.88, Aldehyde dehydrogenase family 4 member A1, L-glutamate gamma-semialdehyde dehydrogenase, ALDH4A1, ALDH4, P5CDH

Format

Liquid. Purified antibody supplied in 1x PBS buffer with 0.09% (w/v) sodium azide and 2% sucrose.

Reconstitution & Storage

Add 100 ul of distilled water. Final anti-ALDH4A1 antibody concentration is 1 mg/ml in PBS buffer with 2% sucrose. For longer periods of storage, store at 20°C. Avoid repeat freeze-thaw cycles.

Precautions

ALDH4A1 antibody - C-terminal region is for research use only and not for use in diagnostic or therapeutic procedures.

ALDH4A1 antibody - C-terminal region - Protein Information

Name ALDH4A1

Synonyms ALDH4, P5CDH

Function

Irreversible conversion of delta-1-pyrroline-5-carboxylate (P5C), derived either from proline or ornithine, to glutamate. This is a necessary step in the pathway interconnecting the urea and tricarboxylic acid cycles. The preferred substrate is glutamic gamma- semialdehyde, other

substrates include succinic, glutaric and adipic semialdehydes.

Cellular Location

Mitochondrion matrix.

Tissue Location

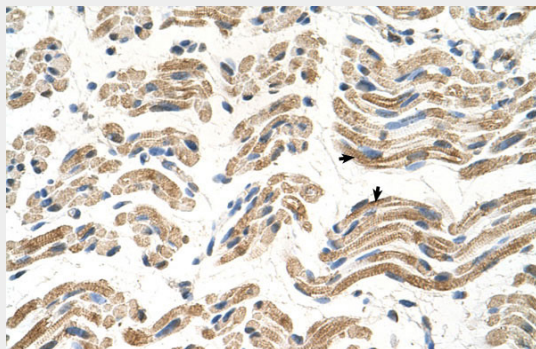
Highest expression is found in liver followed by skeletal muscle, kidney, heart, brain, placenta, lung and pancreas

ALDH4A1 antibody - C-terminal region - Protocols

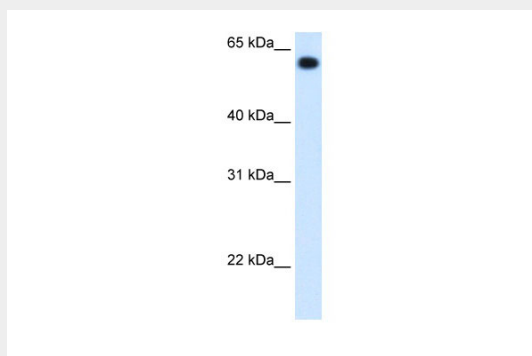
Provided below are standard protocols that you may find useful for product applications.

- [Western Blot](#)
- [Blocking Peptides](#)
- [Dot Blot](#)
- [Immunohistochemistry](#)
- [Immunofluorescence](#)
- [Immunoprecipitation](#)
- [Flow Cytometry](#)
- [Cell Culture](#)

ALDH4A1 antibody - C-terminal region - Images



Human Muscle



WB Suggested Anti-ALDH4A1 Antibody Titration: 1.25 µg/ml
Positive Control: Fetal liver cell lysate

ALDH4A1 antibody - C-terminal region - References

Yoon, K.A., (2004) J. Hum. Genet. 49(3), 134-140 Reconstitution and Storage: For short term use, store at 2-8C upto 1 week. For long term storage, store at -20C in small aliquots to prevent freeze-thaw cycles.