

**RORA antibody - middle region**  
**Rabbit Polyclonal Antibody**  
**Catalog # AI12591**

**Specification**

---

**RORA antibody - middle region - Product Information**

Application	IHC, WB
Primary Accession	<a href="#">P35398</a>
Other Accession	<a href="#">NM_134260</a> , <a href="#">NP_599022</a>
Reactivity	Human, Mouse, Rat, Rabbit, Zebrafish, Goat, Sheep, Horse, Bovine, Guinea Pig, Dog
Predicted	Human, Mouse, Rat, Rabbit, Zebrafish, Pig, Chicken, Bovine, Guinea Pig, Dog
Host	Rabbit
Clonality	Polyclonal
Calculated MW	63kDa KDa

**RORA antibody - middle region - Additional Information**

**Gene ID** 6095

**Alias Symbol** MGC119326, MGC119329, NR1F1, ROR1, ROR2, ROR3, RZRA, RZR-ALPHA

**Other Names**

Nuclear receptor ROR-alpha, Nuclear receptor RZR-alpha, Nuclear receptor subfamily 1 group F member 1, RAR-related orphan receptor A, Retinoid-related orphan receptor-alpha, RORA, NR1F1, RZRA

**Format**

Liquid. Purified antibody supplied in 1x PBS buffer with 0.09% (w/v) sodium azide and 2% sucrose.

**Reconstitution & Storage**

Add 100 ul of distilled water. Final anti-RORA antibody concentration is 1 mg/ml in PBS buffer with 2% sucrose. For longer periods of storage, store at 20°C. Avoid repeat freeze-thaw cycles.

**Precautions**

RORA antibody - middle region is for research use only and not for use in diagnostic or therapeutic procedures.

**RORA antibody - middle region - Protein Information**

**Name** RORA

**Synonyms** NR1F1, RZRA

**Function**

Nuclear receptor that binds DNA as a monomer to ROR response elements (RORE) containing a

single core motif half-site 5'-AGGTCA-3' preceded by a short A-T-rich sequence. Key regulator of embryonic development, cellular differentiation, immunity, circadian rhythm as well as lipid, steroid, xenobiotics and glucose metabolism. Considered to have intrinsic transcriptional activity, have some natural ligands like oxysterols that act as agonists (25-hydroxycholesterol) or inverse agonists (7-oxygenated sterols), enhancing or repressing the transcriptional activity, respectively. Recruits distinct combinations of cofactors to target genes regulatory regions to modulate their transcriptional expression, depending on the tissue, time and promoter contexts. Regulates genes involved in photoreceptor development including OPN1SW, OPN1SM and ARR3 and skeletal muscle development with MYOD1. Required for proper cerebellum development (PubMed:<a href="http://www.uniprot.org/citations/29656859" target="\_blank">29656859</a>). Regulates SHH gene expression, among others, to induce granule cells proliferation as well as expression of genes involved in calcium-mediated signal transduction. Regulates the circadian expression of several clock genes, including CLOCK, BMAL1, NPAS2 and CRY1. Competes with NR1D1 for binding to their shared DNA response element on some clock genes such as BMAL1, CRY1 and NR1D1 itself, resulting in NR1D1-mediated repression or RORA-mediated activation of clock genes expression, leading to the circadian pattern of clock genes expression. Therefore influences the period length and stability of the clock. Regulates genes involved in lipid metabolism such as apolipoproteins APOA1, APOA5, APOC3 and PPARG. In liver, has specific and redundant functions with RORC as positive or negative modulator of expression of genes encoding phase I and phase II proteins involved in the metabolism of lipids, steroids and xenobiotics, such as CYP7B1 and SULT2A1. Induces a rhythmic expression of some of these genes. In addition, interplays functionally with NR1H2 and NR1H3 for the regulation of genes involved in cholesterol metabolism. Also involved in the regulation of hepatic glucose metabolism through the modulation of G6PC1 and PCK1. In adipose tissue, plays a role as negative regulator of adipocyte differentiation, probably acting through dual mechanisms. May suppress CEBPB-dependent adipogenesis through direct interaction and PPARG-dependent adipogenesis through competition for DNA-binding. Downstream of IL6 and TGFB and synergistically with RORC isoform 2, is implicated in the lineage specification of uncommitted CD4(+) T-helper (T(H)) cells into T(H)17 cells, antagonizing the T(H)1 program. Probably regulates IL17 and IL17F expression on T(H) by binding to the essential enhancer conserved non-coding sequence 2 (CNS2) in the IL17- IL17F locus. Involved in hypoxia signaling by interacting with and activating the transcriptional activity of HIF1A. May inhibit cell growth in response to cellular stress. May exert an anti-inflammatory role by inducing CHUK expression and inhibiting NF-kappa-B signaling.

#### Cellular Location

Nucleus {ECO:0000255|PROSITE-ProRule:PRU00407, ECO:0000269|PubMed:18005000, ECO:0000269|PubMed:18354202, ECO:0000269|PubMed:18658046}

#### Tissue Location

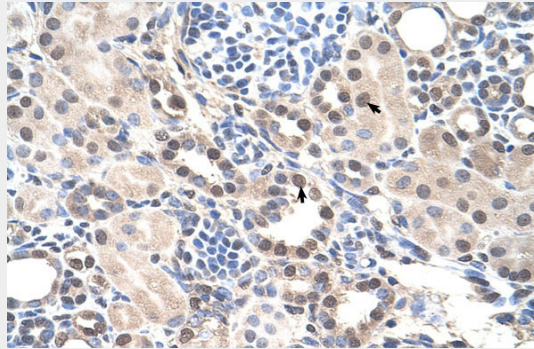
Widely expressed in a number of tissues. Expressed in both regulatory T-cells (Treg) and effector T-cells (Teff) (PubMed:18354202, PubMed:7916608). Isoform 4: Highly expressed in the central nervous system, including in the cerebellum (PubMed:29656859)

### RORA antibody - middle region - Protocols

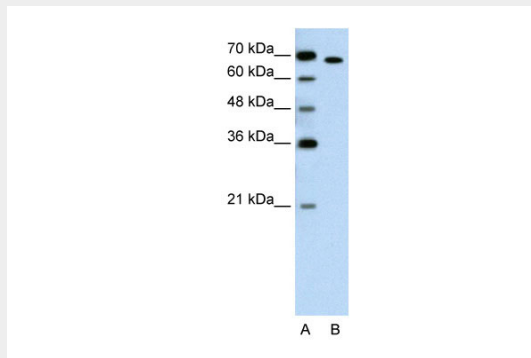
Provided below are standard protocols that you may find useful for product applications.

- [Western Blot](#)
- [Blocking Peptides](#)
- [Dot Blot](#)
- [Immunohistochemistry](#)
- [Immunofluorescence](#)
- [Immunoprecipitation](#)
- [Flow Cytometry](#)
- [Cell Culture](#)

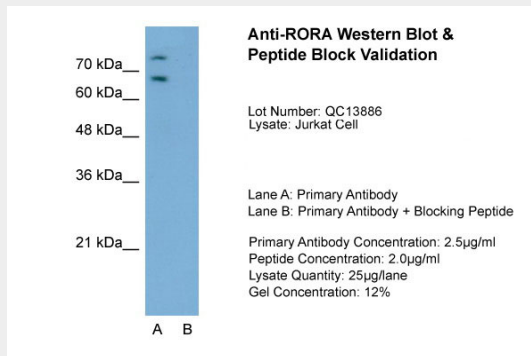
**RORA antibody - middle region - Images**



Human kidney



WB Suggested Anti-RORA Antibody Titration: 1.25µg/ml  
 Positive Control: Jurkat cell lysate



Host: Rabbit  
 Target Name: RORA  
 Sample Tissue: Jurkat  
 Lane A: Primary Antibody  
 Lane B: Primary Antibody + Blocking Peptide  
 Primary Antibody  
 Concentration: 2.5µg/ml  
 Peptide Concentration: 2.0µg/ml  
 Lysate Quantity: 25µg/lane  
 Gel Concentration: 12%

**RORA antibody - middle region - References**

Boukhtouche, F., (2006) J. Neurochem. 96(6), 1778-1789 Reconstitution and Storage: For short term use, store at 2-8°C up to 1 week. For long term storage, store at -20°C in small aliquots to prevent freeze-thaw cycles.