

TAPBP antibody - C-terminal region
Rabbit Polyclonal Antibody
Catalog # AI12578**Specification**

TAPBP antibody - C-terminal region - Product Information

Application	IHC, WB
Primary Accession	O15533
Other Accession	NM_003190 , NP_003181
Reactivity	Human, Pig, Sheep, Bovine
Predicted	Human, Pig, Sheep, Bovine
Host	Rabbit
Clonality	Polyclonal
Calculated MW	46kDa KDa

TAPBP antibody - C-terminal region - Additional Information**Gene ID** 6892**Alias Symbol** NGS17, TAPA, TPN, TPSN**Other Names**

Tapasin, TPN, TPSN, NGS-17, TAP-associated protein, TAP-binding protein, TAPBP, NGS17, TAPA

Format

Liquid. Purified antibody supplied in 1x PBS buffer with 0.09% (w/v) sodium azide and 2% sucrose.

Reconstitution & Storage

Add 50 ul of distilled water. Final anti-TAPBP antibody concentration is 1 mg/ml in PBS buffer with 2% sucrose. For longer periods of storage, store at 20°C. Avoid repeat freeze-thaw cycles.

Precautions

TAPBP antibody - C-terminal region is for research use only and not for use in diagnostic or therapeutic procedures.

TAPBP antibody - C-terminal region - Protein Information**Name** TAPBP ([HGNC:11566](#))**Synonyms** NGS17, TAPA**Function**

Involved in the association of MHC class I with transporter associated with antigen processing (TAP) and in the assembly of MHC class I with peptide (peptide loading).

Cellular Location

Endoplasmic reticulum membrane; Single-pass type I membrane protein

Tissue Location

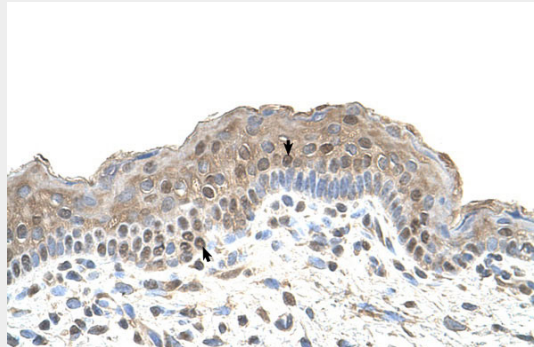
Neutrophils, mostly in fully differentiated cells.

TAPBP antibody - C-terminal region - Protocols

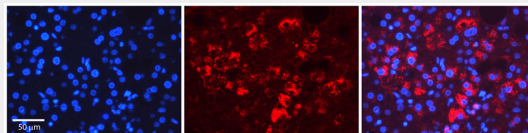
Provided below are standard protocols that you may find useful for product applications.

- [Western Blot](#)
- [Blocking Peptides](#)
- [Dot Blot](#)
- [Immunohistochemistry](#)
- [Immunofluorescence](#)
- [Immunoprecipitation](#)
- [Flow Cytometry](#)
- [Cell Culture](#)

TAPBP antibody - C-terminal region - Images



Human Skin



Rabbit Anti-TAPBP Antibody

Formalin Fixed Paraffin Embedded Tissue: Human Adult liver Observed Staining: Cytoplasmic

Primary Antibody

Concentration: 1:600

Secondary Antibody: Donkey anti-Rabbit-Cy2/3

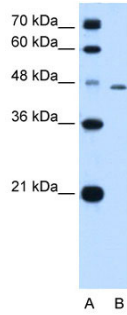
Secondary Antibody

Concentration: 1:200

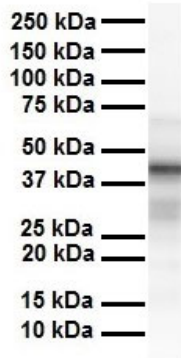
Magnification: 20X

Exposure Time: 0.5 – 2.0 sec

Protocol located in Reviews and Data.



WB Suggested Anti-TAPBP Antibody Titration: 0.5µg/ml
Positive Control: HepG2 cell lysate



WB Suggested Anti-TAPBP antibody Titration: 1 µg/ml
Sample Type: Human liver

TAPBP antibody - C-terminal region - References

Facoetti, A., (2005) Clin. Cancer Res. 11(23), 8304-8311 Reconstitution and Storage: For short term use, store at 2-8°C up to 1 week. For long term storage, store at -20°C in small aliquots to prevent freeze-thaw cycles.